

## 300-420 Dumps

### Designing Cisco Enterprise Networks (ENSLD)

<https://www.certleader.com/300-420-dumps.html>



**NEW QUESTION 1**

An engineer is working for a large cable TV provider that requires multiple sources streaming video on different channels using multicast with no rendezvous point. Which multicast protocol meets these requirements?

- A. PIM-SM
- B. PIM-SSM
- C. any-source multicast
- D. BIDIR-PIM

**Answer:** D

**NEW QUESTION 2**

An engineer is working with NETCONF and Cisco NX-OS based devices. The engineer needs a YANG model that supports a specific feature relevant only to Cisco NX-OS. Which model must the engineer choose?

- A. Native
- B. IEEE
- C. OpenConfig
- D. IETF

**Answer:** D

**NEW QUESTION 3**

Which OSPF area blocks LSA Type 3, 4 and 5, but allows a default summary route?

- A. normal
- B. stub
- C. NSSA
- D. totally stubby

**Answer:** D

**NEW QUESTION 4**

When a first hop redundancy solution is designed, which protocol ensures that load balancing occurs over multiple routers using a single virtual IP address and multiple virtual MAC addresses?

- A. GLBP
- B. IRDP
- C. VRRP
- D. HSRP

**Answer:** A

**NEW QUESTION 5**

What is one function of the vSmart controller in an SD-WAN deployment?

- A. orchestrates vEdge and cEdge connectivity
- B. responsible for the centralized control plane of the SD-WAN network
- C. provides centralized network management and a GUI to monitor and operate the SD-WAN overlay
- D. provides a data-plane at branch offices to pass traffic through the SD-WAN network

**Answer:** B

**NEW QUESTION 6**

Which solution allows overlay VNs to communicate with each other in an SD-WAN Architecture?

- A. External fusion routers can be used to map VNs to VRFs and selectively route traffic between VRFs.
- B. GRE tunneling can be configured between fabric edges to connect one VN to another.
- C. SGTs can be used to permit traffic from one VN to another.
- D. Route leaking can be used on the fabric border nodes to inject routes from one VN to another.

**Answer:** B

**NEW QUESTION 7**

An engineer must propose a QoS architecture model that allows an application to inform the network of its traffic profile and to request a particular type of service to support its bandwidth and delay requirements. The application requires consistent and dedicated bandwidth end to end. Which QoS architecture model meets these requirements?

- A. DiffServ
- B. LLQ
- C. WRED
- D. IntServ

**Answer:** D

#### NEW QUESTION 8

Which two best practices must be followed when designing an out-of-band management network? (Choose two.)

- A. Enforce access control
- B. Facilitate network integration
- C. Back up data using the management network
- D. Ensure that the management network is a backup to the data network
- E. Ensure network isolation

**Answer: AE**

#### NEW QUESTION 9

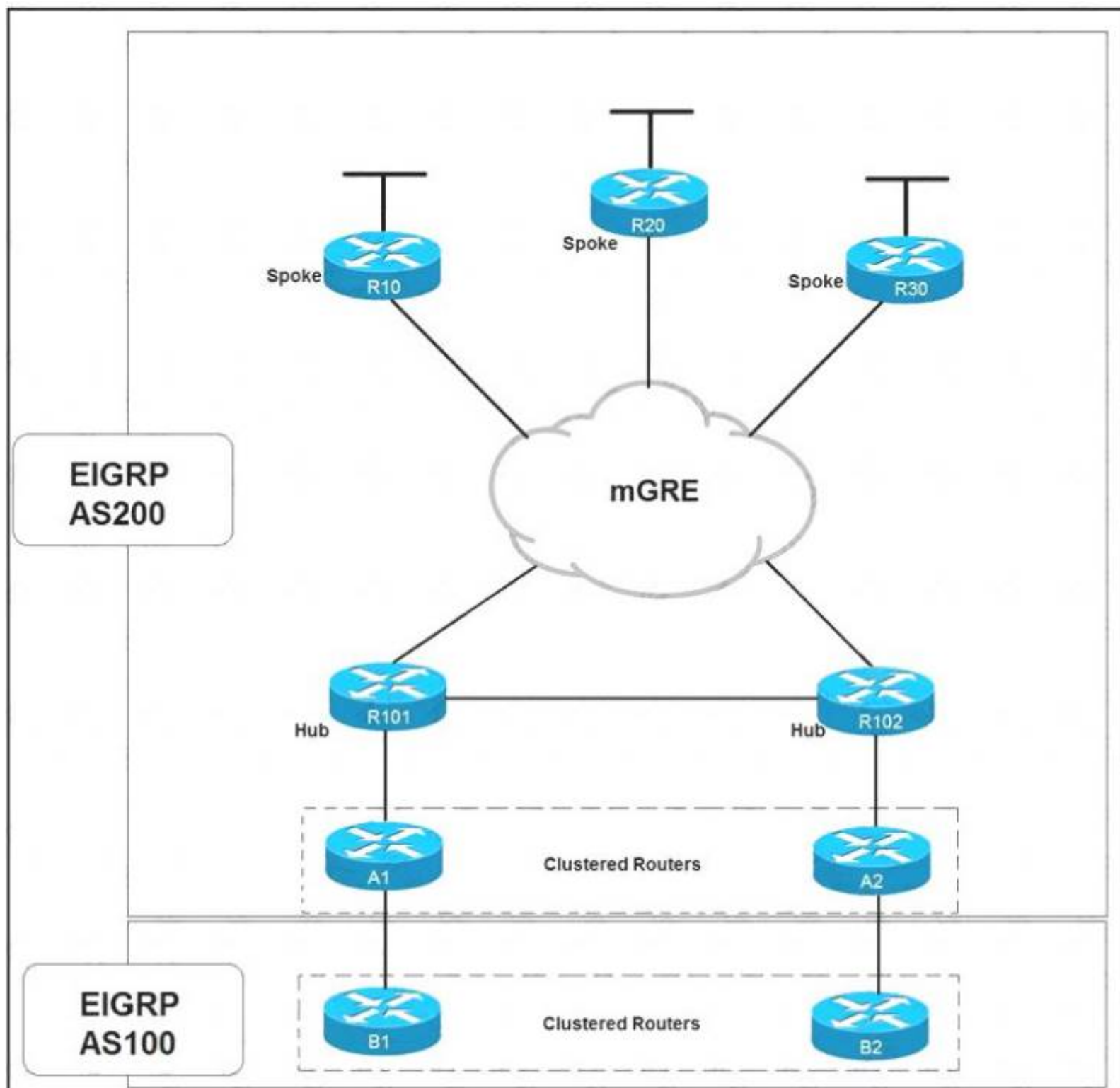
Which nonproprietary mechanism can be used to automate rendezvous point distribution in a large PIM domain?

- A. Embedded RP
- B. BSR
- C. Auto-RP
- D. Static RP

**Answer: B**

#### NEW QUESTION 10

Refer to the exhibit.



Which solution decreases the EIGRP convergence time?

- A. Enable subsecond timers
- B. Increase the hold time value
- C. Increase the dead timer value
- D. Enable stub routing on the spokes

**Answer: D**

#### NEW QUESTION 10

When IPsec VPNs are designed, what is a unique requirement if support for IP Multicast is required?

- A. encapsulation of traffic with GRE or VTI
- B. IPsec forwarding using transport mode
- C. additional bandwidth for headend
- D. IPsec forwarding using tunnel mode

**Answer: A**

#### NEW QUESTION 13

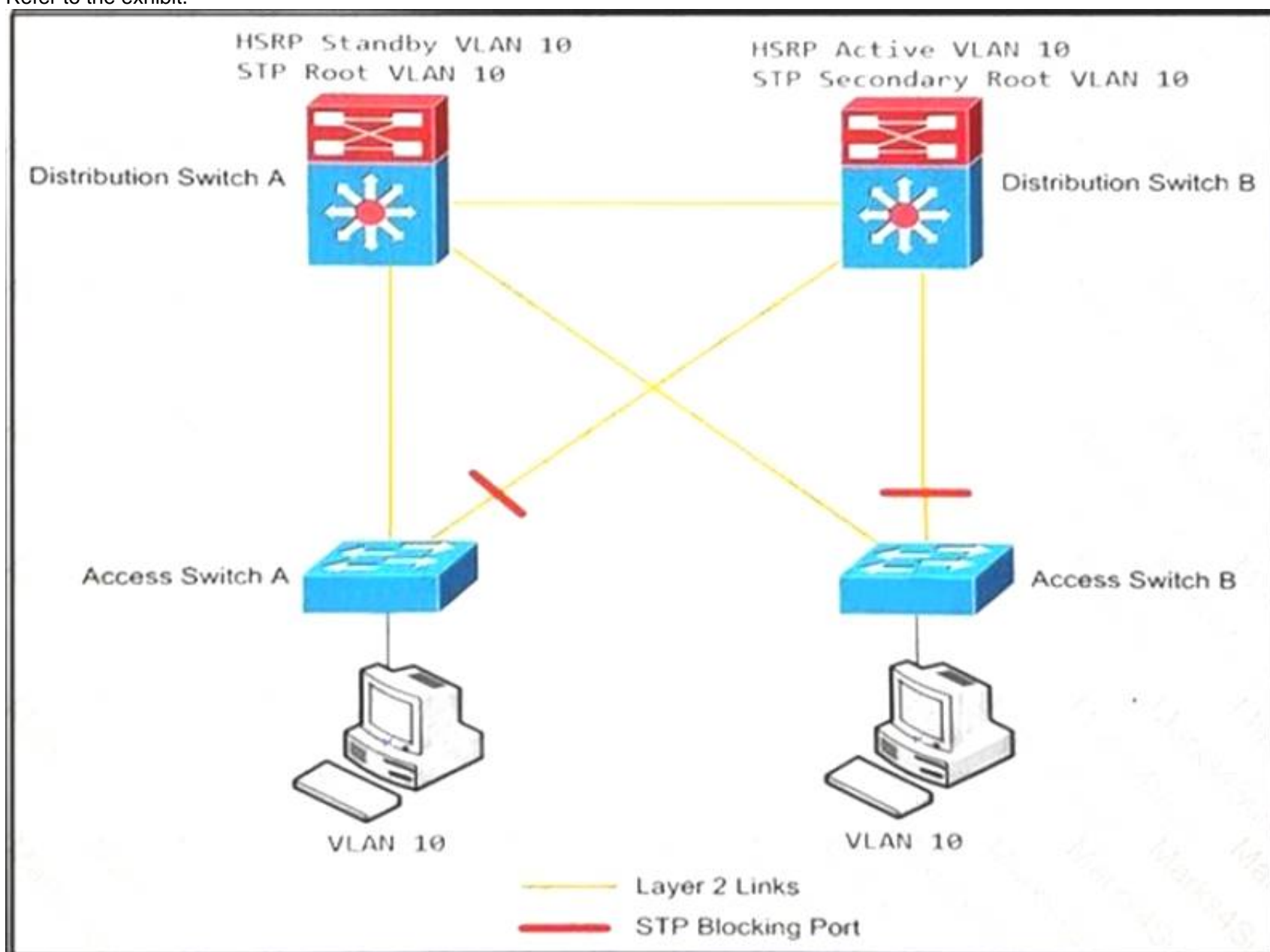
Which design consideration should be observed when EIGRP is configured on Data Center switches?

- A. Perform manual summarization on all Layer 3 interfaces to minimize the size of the routing table.
- B. Prevent unnecessary EIGRP neighborships from forming across switch virtual interfaces.
- C. Lower EIGRP hello and hold timers to their minimum settings to ensure rapid route reconvergence.
- D. Configure multiple EIGRP autonomous systems to segment Data Center services and applications.

**Answer: A**

#### NEW QUESTION 18

Refer to the exhibit.



An engineer must optimize the traffic flow of the network. Which change provides a more efficient design between the access and the distribution layer?

- A. Add a link between access switch A and access switch B
- B. Reconfigure the distribution switch A to become the HSRP Active
- C. Change the link between distribution switch A and distribution switch B to be a routed link
- D. Create an EtherChannel link between distribution switch A and distribution switch B

**Answer: B**

#### NEW QUESTION 21

Which consideration must be taken into account when using the DHCP relay feature in a Cisco SD-Access Architecture?

- A. DHCP-relay must be enabled on fabric edge nodes to provide the correct mapping of DHCP scope to the local anycast gateway.
- B. A DHCP server must be enabled on the border nodes to allow subnets to span multiple fabric edges.
- C. DHCP servers must support Cisco SD-Access extensions to correctly assign IPs to endpoints in an SDAccess fabric with anycast gateway.
- D. DHCP Option-82 must be enabled to map the circuit IP option to the access fabric node where the DHCP discover originated.

**Answer: A**

#### NEW QUESTION 22

Which two BGP features will result in successful route exchanges between eBGP neighbors sharing the same AS number? (Choose two.)

- A. advertise-best-external
- B. bestpath as-path ignore
- C. client-to-client reflection
- D. as-override
- E. allow-as-in

**Answer:** DE

**NEW QUESTION 24**

A network solution is being designed for a company that connects to multiple Internet service providers. Which Cisco proprietary BGP path attribute will influence outbound traffic flow?

- A. Local Preference
- B. MED
- C. Weight
- D. AS Path
- E. Community

**Answer:** C

**NEW QUESTION 29**

An engineer is designing an enterprise campus network. The LAN infrastructure consists of switches from multiple vendors, and Spanning Tree must be used as a Layer 2 loop prevention mechanism. All configured VLANs must be grouped in two SIP instances. Which standards-based Spanning Tree technology supports this design solution?

- A. MSTP
- B. RSTP
- C. Rapid PVST
- D. STP

**Answer:** A

**NEW QUESTION 31**

Drag and drop the characteristics from the left onto the correct telemetry mode on the right.

The collector initiates a session to the device	Dial-In
supports TCP, UDP, and gRPC	
The device initiates a session to the collector	Dial-Out
supports gRPC only	

- A. Mastered
- B. Not Mastered

**Answer:** A

**Explanation:**

In a dial-in mode, the destination initiates a session to the router and subscribes to data to be streamed. Dialin mode is supported over gRPC in only 64-bit platforms

In a dial-out mode, the router initiates a session to the destinations based on the subscription. All 64-bit IOS XR platforms (except for NCS 6000 series routers) support gRPC and TCP protocols. All 32-bit IOS XR platforms support only TCP.

**NEW QUESTION 33**

A company is using OSPF between its HQ location and a branch office. HQ is assigned area 0 and the branch office is assigned area 1. The company purchases a second branch office, but due to circuit delays to HQ, it decides to connect the new branch office to the creating branch office as a temporary measure. The new branch office is assigned area 2. Which OSPF configuration enables all three locations to exchange routes?

- A. The existing branch office must be configured as a stub area
- B. A virtual link must be configured between the new branch office and HQ
- C. A sham link must be configured between the new branch office and HQ
- D. The new branch office must be configured as a stub area

**Answer:** B

**NEW QUESTION 36**

.....



## Thank You for Trying Our Product

\* 100% Pass or Money Back

All our products come with a 90-day Money Back Guarantee.

\* One year free update

You can enjoy free update one year. 24x7 online support.

\* Trusted by Millions

We currently serve more than 30,000,000 customers.

\* Shop Securely

All transactions are protected by VeriSign!

**100% Pass Your 300-420 Exam with Our Prep Materials Via below:**

<https://www.certleader.com/300-420-dumps.html>