



# Cisco

## Exam Questions 300-615

Troubleshooting Cisco Data Center Infrastructure (DCIT)

## About ExamBible

### *Your Partner of IT Exam*

## Found in 1998

ExamBible is a company specialized on providing high quality IT exam practice study materials, especially Cisco CCNA, CCDA, CCNP, CCIE, Checkpoint CCSE, CompTIA A+, Network+ certification practice exams and so on. We guarantee that the candidates will not only pass any IT exam at the first attempt but also get profound understanding about the certificates they have got. There are so many alike companies in this industry, however, ExamBible has its unique advantages that other companies could not achieve.

## Our Advances

### \* 99.9% Uptime

All examinations will be up to date.

### \* 24/7 Quality Support

We will provide service round the clock.

### \* 100% Pass Rate

Our guarantee that you will pass the exam.

### \* Unique Gurantee

If you do not pass the exam at the first time, we will not only arrange FULL REFUND for you, but also provide you another exam of your claim, ABSOLUTELY FREE!

#### NEW QUESTION 1

```

N9K-A
interface Vlan100
ip address 10.10.100.194/26
ip router eigrp 50
ip passive-interface eigrp 50
hsrp 100
authentication text pa$$word
preempt
priority 150
timers msec 500 msec 1000
ip 10.10.100.193
no shutdown

N9K-B
interface Vlan100
ip address 10.10.100.195/26
ip router eigrp 50
ip passive-interface eigrp 50
hsrp 100
authentication text pa$$word
preempt
priority 120
timers msec 300 msec 1500
ip 10.10.100.193
no shutdown

N9K-A# sh hsrp brief
*:IPv6 group #:group belongs to a bundle
P indicates configured to preempt.
Interface Grp Prio P State Active addr Standby addr Group addr
Vlan100 100 150 P Active local unknown 10.10.100.193 (conf)

N9K-B# sh hsrp brief
*:IPv6 group #:group belongs to a bundle
P indicates configured to preempt.
Interface Grp Prio P State Active addr Standby addr Group addr
Vlan100 100 120 P Active local unknown 10.10.100.193 (conf)

```

Refer to the exhibit. The HSRP instance on both switches is showing as active. Which action resolves the issue?

- A. Configure the HSRP timers to be the same.
- B. Allow VLAN 100 between the switches.
- C. Configure the IP address of N9K-B on the same subnet as N9K-A.
- D. Configure preempt on only one of the switches.

**Answer: B**

#### NEW QUESTION 2

```

switch# show interface fc1/5
fc1/5 is down (NPV upstream port not available)
Hardware is Fibre Channel, SFP is short wave laser w/o OFC (SN)
Port WWN is 20:47:00:0d:ac:a4:3b:83
Admin port mode is F, turnk mode is off
snmp link state traps are enabled
Port vsan is 100
Receive data field Size is 2112

```

Refer to the exhibit. Interface fc1/5 is offline. Which action should be taken to troubleshoot the issue?

- A. Activate the correct zoneset for VSAN 100.
- B. Update the FLOGI database to contain the FLOGI entries for interface fc1/5 in VSAN 100.
- C. Update the FCNs database to contain names for VSAN 100.
- D. Configure the upstream ports and the server ports to be in VSAN 100.

**Answer: D**

#### NEW QUESTION 3

You have an ACI environment with three APICs, two spine switches, and four-leaf switches. You wipe and reboot all APICs first then leaf and spine switches one-by-one and successfully go through the Initial Setuo dialogue on the APIC 1 CIMC KVM console. When you log in to the APIC1 WebGUI, you notice that you do not see any directly connected leaf switches being discovered under Fabric > Inventory > Fabric Membership. What is the cause of the issue?

- A. The leaf nodes were not erased properly, which caused a fabric parameters mismatch with the APIC1.
- B. Rebooting the APICs and the leaf and spine switches after wiping them is not required.
- C. You forgot to enter the TEP Pool value during the Initial Setup dialogue on APIC1.
- D. The same Fabric Name value should be used before after wiping all devices.

**Answer: C**

#### NEW QUESTION 4

DRAG DROP

Drag and drop the Cisco UCS SNMP fault types from the left onto the correct issues on the right.  
Select and Place:

|              |   |
|--------------|---|
| connectivity | A server discovery fails.                 |
| environment  | An adapter is unreachable.                |
| operational  | A voltage issue is detected.              |
| server       | A service profile is unable to associate. |

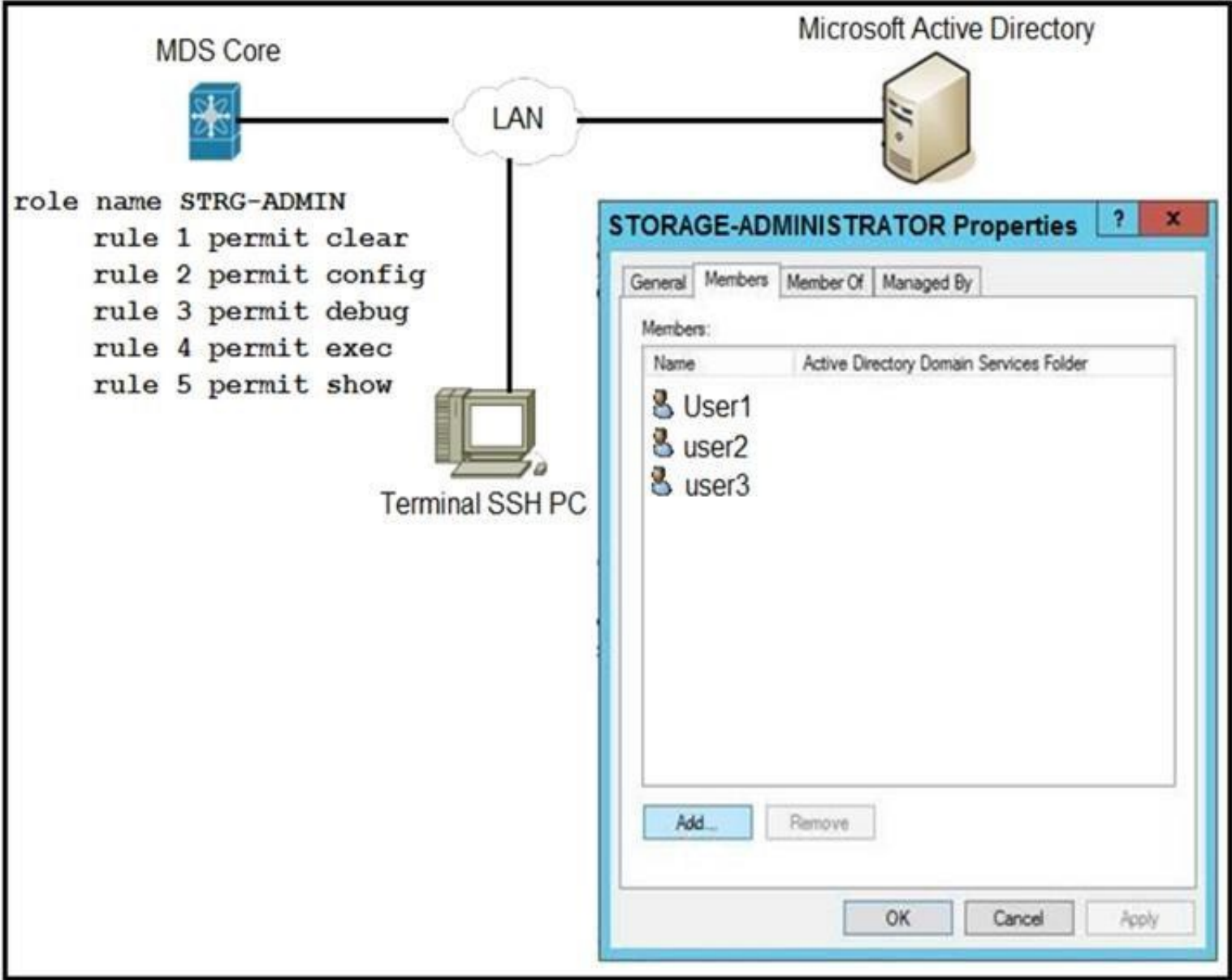
- A. Mastered
- B. Not Mastered

Answer: A

Explanation:

|              |              |
|--------------|--------------|
| connectivity | operational  |
| environment  | connectivity |
| operational  | environment  |
| server       | server       |

NEW QUESTION 5





Refer to the exhibit. An engineer is troubleshooting why user1, user2, and user3 from group STORAGE-ADMINISTRATOR in Microsoft Active Directory cannot log in to the Cisco MDS SSH CLI. Which action resolves the issue?

- A. Configure the role name to match the group name on Microsoft Active Directory.
- B. Include specific users into MDS role configuration.
- C. Configure SSH logins on Cisco MDS switch.
- D. Integrate Cisco MDS with Microsoft Active Directory.

**Answer:** A

#### NEW QUESTION 6

```
FC0001# show zone active
zone name hba1_VN0001 vsan 3201
  fcid 0x970209 [pwwn 50:ab:0b:00:00:c2:8f:de]
* fcid 0x970102 [pwwn 20:ba:00:a0:98:3b:6f:d8]

zone name hba1_VN0002 vsan 3201
* fcid 0x970200 [pwwn 50:ab:0b:00:00:c2:8a:67]
  fcid 0x9700c2 [pwwn 20:ba:00:a0:98:3b:61:99]
```

Refer to the exhibit. The initiator that has FC ID 0x970102 fails to communicate with the target that has FC ID 0x970200. What action resolves the issue?

- A. Reconfigure the initiator and the target to be in the same zones.
- B. Reactivate the zoneset.
- C. Reset the port for FC ID 0x970102 and FC ID 0x970200 to log in to the fabric.
- D. Reset the port for FC ID 0x970209 and FC ID 0x9700c2 to log in to the fabric.

**Answer:** B

#### NEW QUESTION 7

```
event manager applet config_monitor
event cli match "conf t"
action 1.0 snmp-trap strdata "User has entered into configuration mode"
```

Refer to the exhibit. The EEM script fails to send an SNMP trap when a user attempts to enter configuration mode. Which configuration is missing from the script?

- A. event statement
- B. event-default action statement
- C. policy-default action statement
- D. IP address of the SNMP server

**Answer:** D

#### NEW QUESTION 8

Refer to the exhibit. A network engineer configures an EEM script to get a syslog notification after a configuration change. This message appears when the engineer must make a new configuration to this switch. Which configuration did the engineer neglect to apply in the script for it to function properly?

- A. event cli match 'configure terminal'
- B. event policy-default count 1 time 100
- C. event syslog occurs 10
- D. action 2.0 event-default

**Answer:** D

#### NEW QUESTION 9

```
switch# guestshell resize cpu 4
Note: System CPU share will be resized on Guest shell enable
```

Refer to the exhibit. After the configuration is performed, guestshell continues to use 2%CPU. Which action resolves the issue?

- A. Resync the database
- B. Recreate the guestshell
- C. Reboot the guestshell
- D. Reboot the switch

**Answer:** C

#### NEW QUESTION 10

A server administrator attempts to change the Cisco IMC KVM certificate to one signed by a private CA, but the certificate is not being accepted. What can cause this process to fail?

- A. using a certificate with a password-protected private key
- B. RSA encryption being used in the generation of the certificate.
- C. AES encryption being used in the generation of the certificate.

D. public IP address of the Cisco IMC not being included in the SAN.

**Answer:** A

#### **NEW QUESTION 10**

Refer to the exhibit. Cisco UCS Manager is being upgraded using the Auto Install feature, but the FSM fails. Which action resolves the issue?

- A. Acknowledge the primary fabric interconnect.
- B. Remove the service pack from the subordinate fabric interconnect.
- C. Clear the startup version of the default infrastructure pack.
- D. Upgrade the firmware of the infrastructure firmware by using the force option.

**Answer:** C

#### **NEW QUESTION 14**

.....

## Relate Links

**100% Pass Your 300-615 Exam with ExamBible Prep Materials**

<https://www.exambible.com/300-615-exam/>

## Contact us

We are proud of our high-quality customer service, which serves you around the clock 24/7.

Viste - <https://www.exambible.com/>