

CompTIA

Exam Questions N10-007

CompTIA Network+ N10-007



NEW QUESTION 1

- (Exam Topic 1)

Which of the following wireless connection types utilize MIMO on non-overlapping channels? (Choose two.)

- A. 802.11a
- B. 802.11ac
- C. 802.11b
- D. 802.11g
- E. 802.11n

Answer: BE

NEW QUESTION 2

- (Exam Topic 1)

Which of the following is a vulnerable system designed to detect and log unauthorized access?

- A. SIEM
- B. Honeypot
- C. DMZ
- D. Proxy server

Answer: B

NEW QUESTION 3

- (Exam Topic 1)

Which of the following DNS record types is an alias?

- A. CNAME
- B. PTR
- C. NS
- D. SRV

Answer: A

NEW QUESTION 4

- (Exam Topic 1)

A network technician installs a web server on the firewall. Which of the following methods should the technician implement to allow access to outside users without giving access to the inside network?

- A. VLAN
- B. DMZ
- C. SNMP
- D. NTP

Answer: B

NEW QUESTION 5

- (Exam Topic 1)

A home user has purchased a new smart TV to stream online video services. The smart TV is unable to connect to the wireless network after several attempts. After from vacation, the home user tries again and can connect the TV to wireless network. However, the user notice a laptop is no longer able to connect to the network. Which of the following is the MOST likely cause?

- A. The DHCP scope has been exhausted.
- B. The security passcode has been changed
- C. The SSID is hidden.
- D. The AP configuration was reset.

Answer: A

NEW QUESTION 6

- (Exam Topic 1)

A administrator is troubleshooting a user's intermittent wireless connectivity issue. Other users across the hallway can connect use the wireless network properly. Upon inspection of the connection details, the administrator finds the following:

SSID	Company-WiFi
Signal	5%
SNR	2

Which of the following is MOST likely the cause of the poor wireless connection?

- A. Channel overlap
- B. Overcapacity
- C. Incorrect antenna type

D. Latency

Answer: C

NEW QUESTION 7

- (Exam Topic 1)

A technician is configuring a default route with IPv6. Which of the following is the correct setting for an IPV6 default rout?

- A. :: 1
- B. :: /0
- C. 2001: :0/64
- D. FE80 : :0/64

Answer: C

NEW QUESTION 8

- (Exam Topic 1)

A network technician is planning to update the firmware on a router on the network. The technician has downloaded the file from the vendor's website. Before installing the firmware update, which of the following steps should the technician perform to ensure file integrity?

- A. Perform antivirus and anti-malware scans of the file.
- B. Perform a hash on the file for comparison with the vendor's hash.
- C. Download the file a second time and compare the version numbers.
- D. Compare the hash of the file to the previous firmware update.

Answer: B

NEW QUESTION 9

- (Exam Topic 1)

A new building needs to be joined to an existing network, but management has decided that running fiber is too expensive. Since the buildings are bout 1000ft (305m) apart, the IT department has been asked to propose alternatives. Which of the following is the BEST device to add to each building to facilitate the extension of the network while meeting budgetary demands?

- A. Switch
- B. Router
- C. Media converter
- D. PTP wireless

Answer: D

NEW QUESTION 10

- (Exam Topic 1)

A technician is installing a new wireless badging system on a hospital network. The requirements of the badging system are for it to have its own SSID and low power levels. The badging system has to cover 99.9% of the hospital. Which of the following is the BEST action to take to meet the system requirements?

- A. Install additional WAPs
- B. Install external antennas
- C. Move the WAPs closer to the more populated area
- D. Change the antenna types

Answer: A

NEW QUESTION 10

- (Exam Topic 1)

A company has contracted with an outside vendor to perform a service that will provide hardware, software, and procedures in case of a catastrophic failure of the primary datacenter. The Chief Information Officer (CIO) is concerned because this contract does not include a long-term strategy for extended outages. Which of the following should the CIO complete?

- A. Disaster recovery plan
- B. Business continuity plan
- C. Service level agreement
- D. First responder training

Answer: B

NEW QUESTION 15

- (Exam Topic 1)

An entire enterprise cannot access a specific website. The network technician knows the website was accessible last week. The technician can also ping the website. Which of the following is the technician MOST likely to find upon investigation?

- A. The firewall is misconfigured.
- B. The network is being hit by a zero-day attack.
- C. The SSL certificate is untrusted.
- D. The SSL certificate has expired.

Answer: D

NEW QUESTION 16

- (Exam Topic 1)

Users are reporting Internet connectivity issues. The network administrator wants to determine if the issues are internal to the company network or if there is an issue with the ISP. Which of the following tools should be used to BEST determine where the outage is occurring?

- A. traceroute
- B. ping
- C. nslookup
- D. netstat

Answer: A

NEW QUESTION 18

- (Exam Topic 1)

To replace a defective UPS, the network administrator must take the switch offline. The administrator wants to be able to perform maintenance UPS in the future without affecting the availability of the attached switch. Which of the following would BEST allow this to happen?

- A. Add a redundant power supply to the switch
- B. Implement stacking on the switches in the rack
- C. Add a second UPS into the rack
- D. Install a power converter for the switch

Answer: A

NEW QUESTION 23

- (Exam Topic 1)

A technician must determine if a web page user's visits are connecting to a suspicious website's IP address in the background. Which of the following tools would provide the information on TCP connections?

- A. netstat
- B. tracert
- C. arp
- D. ipconfig
- E. route

Answer: A

NEW QUESTION 26

- (Exam Topic 1)

A technician attempts to replace a switch with a new one of similar model from the same vendor. When the technician moves the fiber and SFP plug, the switch does not completely boot up. Considering that the config files are the same, which of the following is the MOST likely cause of the failure?

- A. Damaged fiber
- B. Corrupted operating system
- C. VLAN mismatch
- D. Bad port

Answer: B

NEW QUESTION 30

- (Exam Topic 1)

A network technician needs to set up an access method for Ann, a manager, to work from home. Ann needs to locally mapped corporate resources to perform her job. Which of the following would provide secure access to the corporate resources?

- A. Utilize an SSH connection to the corporate server.
- B. Use TFTP to transfer files to corporate resources.
- C. Allow RDP through an external firewall.
- D. Connect utilizing client-to-site VPN.

Answer: D

NEW QUESTION 34

- (Exam Topic 1)

In a service provider network, a company has an existing IP address scheme. Company A's network currently uses the following scheme:

```
Subnet 1: 192.168.1.0/26
Subnet 2: 192.168.1.65/26
```

Company b uses the following scheme: Subnet 1: 192.168.1.50/28

The network administrator cannot force the customer to update its IP scheme. Considering this, which of the following is the BEST way for the company to connect these networks?

- A. DMZ
- B. PAT
- C. NAT
- D. VLAN

Answer: C

NEW QUESTION 39

- (Exam Topic 1)

A critical vulnerable is discovered on a network device. The vendor state it has already patched this vulnerable in its current release. Which of the following actions should an administrator take?

- A. Change the default password.
- B. Use a firewall in front of the device.
- C. Update the firmware.
- D. Upgrade the configuration.

Answer: B

NEW QUESTION 43

- (Exam Topic 1)

A network technician recently installed a new server on a network. The technician must ensure the server does not have any unnecessary services running. The IP address of the server is 204.211.38.50

Which of the following commands would allow the technician to make this determination?

- A. nmap
- B. pathping
- C. route
- D. nslookup

Answer: A

NEW QUESTION 48

- (Exam Topic 1)

A critical vulnerability is discovered on a network device. The vendor states it has already patched this vulnerability in its current release. Which of the following actions should an administrator take?

- A. Change the default password
- B. Use a firewall in front of the device.
- C. Update the firmware.
- D. Upgrade the configuration.

Answer: C

NEW QUESTION 53

- (Exam Topic 1)

A technician is setting up a public guest network for visitors to access the Internet that must be separate from the corporate network. Which of the following are the BEST steps for the technician to take with minimum overhead configuration? (Choose two.)

- A. Enable SSID broadcasting to identify the guest network
- B. Configure visitor devices to use static IP addresses
- C. Enable two-factor authentication on visitor devices
- D. Configure the access point to use WPA2-AES encryption
- E. Ensure the access point is not running in mixed mode

Answer: AB

NEW QUESTION 57

- (Exam Topic 1)

A network technician is setting up a new router. Since it is exposed to the public, which of the following are the BEST steps the technician should take when setting up this device? (Choose two.)

- A. Disable unnecessary services.
- B. Use private IP addresses.
- C. Allow remote management access.
- D. Disable the console port.
- E. Enable encryption.
- F. Upgrade to the latest firmware.

Answer: AF

NEW QUESTION 58

- (Exam Topic 1)

A user checks an IP address using an external website. The address is different than the one the user sees when opening a command prompt and typing in ipconfig/all. The user does not understand why the two tools show different IP addresses. This is BEST explained by the interworking of:

- A. network devices
- B. packet flow
- C. public/private networks
- D. traffic-routing protocols

Answer: C

NEW QUESTION 63

- (Exam Topic 1)

A technician is troubleshooting a point-to-point fiber-optic connection. The technician is at a remote site and has no connectivity to the main site. The technician confirms the switch and the send-and-receive light levels are within acceptable range. Both fiber SFPs are confirmed as working. Which of the following should the technician use to reveal the location of the fault?

- A. OTDR
- B. Light meter
- C. Tone generator
- D. CSU/DSU

Answer: A

NEW QUESTION 68

- (Exam Topic 1)

A technician discovers that multiple switches require a major update. Which of the following policies should be followed?

- A. Change management policy
- B. Remote access policy
- C. Acceptable use policy
- D. Memorandum of understanding

Answer: A

NEW QUESTION 69

- (Exam Topic 1)

A router is set up to utilize RIPv2 to route traffic throughout the network. Which of the following routing metrics is used to determine the path?

- A. Distance
- B. bandwidth
- C. Speed
- D. hop count

Answer: D

NEW QUESTION 71

- (Exam Topic 1)

A network technician receives a call from a user in the accounting department stating that Internet connectivity has been lost after receiving a new workstation. No other users in accounting are reporting similar issues. The network technician is able to ping the machine from the accounting department's router, but is not able to ping the machine from the IT network. Which of the following is MOST likely the cause?

- A. Incorrect default gateway
- B. Duplicate IP address
- C. Misconfigured OSPF
- D. Improper VLAN assignment

Answer: A

NEW QUESTION 73

- (Exam Topic 1)

A technician is troubleshooting network connectivity issues with a remote host. Which of the following tools would BEST inform the technician of nodes between the client and the remote host? (Choose two.)

- A. tracer
- B. ping
- C. tcpdump
- D. pathping
- E. netstat
- F. nslookup
- G. route

Answer: AD

NEW QUESTION 77

- (Exam Topic 1)

Which of the following are characteristics of jumbo frames? (Choose two.)

- A. Commonly used on SAN
- B. MTU size greater than 1500
- C. MTU size greater than 10000
- D. Commonly used on IaaS
- E. MTU size greater than 12000

Answer: AB

NEW QUESTION 82

- (Exam Topic 1)

A network engineer planning for wireless connectivity in large office building. Currently, the office building contains both legacy and newer devices. Which of the following wireless network routers should engineer select for the fastest throughput for all wireless devices in the office building?

- A. 802.11ac
- B. 802.11b
- C. 802.11g
- D. 802.11n

Answer: A

Explanation:

<https://www.forbes.com/forbes/welcome/?toURL=https://www.forbes.com/sites/gordonkelly/2014/12/30/802-11>

NEW QUESTION 84

- (Exam Topic 1)

802.11 n clients currently have no way to connect to the network. Which of the following devices should be implemented to let the clients connect?

- A. Router
- B. Range extender
- C. VoIP endpoint
- D. Access point

Answer: D

NEW QUESTION 88

- (Exam Topic 1)

Which of the following provides the ability to deploy consistent access point configurations from a central location?

- A. Wireless controller
- B. AAA server
- C. WiFi-protected setup
- D. Proxy server
- E. VPN concentrator

Answer: A

NEW QUESTION 93

- (Exam Topic 1)

A network administrator wishes to ensure there are no unnecessary open communication paths into a server. Using a port scanner, the administrator finds that ports are reported as closed. Which of the following BEST explains this response?

- A. The ports belong to an active system and are denying requests
- B. The ports are associated with deprecated services
- C. The ports do not belong to a live system
- D. The ports replied with a SYN/ACK response

Answer: B

NEW QUESTION 98

- (Exam Topic 1)

A company recently upgraded all of its printers to networked multifunction devices. Users can print to the new devices, but they would also like the ability to scan and fax files from their computers. Which of the following should the technician update to allow this functionality?

- A. Device software
- B. Printer drivers
- C. Printer firmware
- D. NIC drivers

Answer: C

NEW QUESTION 100

- (Exam Topic 1)

A network technician is implementing a solution on the network to hide the workstation internal IP addresses across a WAN. Which of the following is the technician configuring?

- A. QoS
- B. DMZ
- C. RIP
- D. NAT

Answer: D

NEW QUESTION 101

- (Exam Topic 1)

A forensic first responder arrives at the scene where an employee is suspected to have committed a computer-based crime. Which of the following should the first responder do FIRST?

- A. Document the scene
- B. Take pictures upon arrival
- C. Secure the area
- D. Implement chain of custody

Answer: C

NEW QUESTION 103

- (Exam Topic 1)

Two building used to be connected by wireless bridge, but they are upgrading to fiber. Which of the following new devices would be required at the demarcation points?

- A. Wireless access point
- B. Router
- C. Media converter
- D. Firewall

Answer: B

NEW QUESTION 107

- (Exam Topic 1)

A disgruntled employee decides to leak critical information about a company's new product. The employee places keyloggers on the department's computers, allowing the information to be sent out to the Internet. Which of the following attacks is occurring?

- A. Man-in-the-middle
- B. Logic bomb
- C. Insider threat
- D. Social engineering

Answer: C

NEW QUESTION 109

- (Exam Topic 1)

A network technician is creating a new subnet for 488 host machines. The technician is told to use a class B address scheme when making the subnet and is instructed to leave as much room as possible for additional subnets of the same size. Which of the following subnets would fulfill these requirements?

- A. 10.5.4.0/22
- B. 10.233.2.0/23
- C. 172.16.0.0/22
- D. 172.18.0.0/23
- E. 192.168.25.0/24

Answer: D

NEW QUESTION 114

- (Exam Topic 1)

A typical cell tower will have microwave and cellular antennas. Which of the following network topologies do these represent? (Choose two.)

- A. Point-to-multipoint
- B. Bus
- C. Point-to-point
- D. Mesh
- E. Peer-peer
- F. Ring

Answer: CD

NEW QUESTION 119

- (Exam Topic 1)

A network administrator frequency needs to assist users with troubleshooting network hardware remotely, but the users are non-technical and unfamiliar with network devices. Which of the following would BEST help the administrator and users during hands-on troubleshooting?

- A. Logical diagrams
- B. MDF documentation
- C. Equipment labeling
- D. Standard operating procedures

Answer: D

NEW QUESTION 124

- (Exam Topic 1)

Which of the following would allow a device to maintain the same IP address lease based on the physical address of the network card?

- A. MAC address reservation
- B. Static IP address
- C. IP address exclusion
- D. Custom DNS server entry

Answer: A

NEW QUESTION 127

- (Exam Topic 1)

A technician set up a new SOHO network recently. The installed router has four Ethernet ports; however the customer has seven devices that wired connections. Which of the following should the technician do to BEST meet the customer's requirements?

- A. Install a six-port switch
- B. Configure port forwarding on the router
- C. Install WAPs near the devices.
- D. Configure the switchports as EtherChannel ports.

Answer: A

NEW QUESTION 131

- (Exam Topic 1)

A technician is configuring a printer for a client. The which of the following types to the network, But is unsure how to determine its switch port. Which of the following should the technician do FIRST to locate switch port?

- A. perform a DNS lookup on the server.
- B. Set up a SSH session to the desktop
- C. Reference the ARP table in the router
- D. Configure port security on the switch.

Answer: D

NEW QUESTION 134

- (Exam Topic 1)

A technician is upgrading the firmware on an older KVM switch. The specifications call for a serial port to connect to the computer on one side, and an Ethernet jack to connect to the switch on the other side. Which of the following connectors does the technician need for this cable? (Choose two.)

- A. RG-9
- B. DB-9
- C. RJ-11
- D. DB-25
- E. RJ-45
- F. BNC

Answer: BE

NEW QUESTION 136

- (Exam Topic 1)

A network technician is working on a new switch implementation to expand the network. Which of the following is the BEST option to ensure the implementation goes according to business requirements?

- A. AUP
- B. NDA
- C. SOP
- D. SLA

Answer: C

NEW QUESTION 138

- (Exam Topic 1)

An ISP technician gets a call from a business that just changed equipment but can no longer connect to the Internet. The technician checks the ARP table on the ISP switch, and there is no corresponding MAC address present. Instead, the entry is "Incomplete". Which of the following could cause this condition?

- A. VLAN mismatch
- B. Duplex/Speed mismatch
- C. Duplicate IP address
- D. TX/RX reverse

Answer: B

NEW QUESTION 141

- (Exam Topic 1)

A network technician has salvaged several Ethernet cables from a datacenter. The technician attempts to use the cables to connect desktops to the network without success. Which of the following is MOST likely the issue?

- A. The cables have an incorrect pin-out.
- B. The cables are UTP instead of STP.
- C. The cables are Cat 6 instead of Cat 5.
- D. The cables are not plenum rated.

Answer: A

NEW QUESTION 146

- (Exam Topic 1)

A network technician wants to remotely and securely access the desktop of a Linux workstation. The desktop is running remote control software without encryption. Which of the following should the technician use to secure the connection?

- A. SSH in tunnel mode
- B. RDP set to console connection
- C. EAP-PEAP
- D. SFTP

Answer: A

NEW QUESTION 147

- (Exam Topic 1)

Which of the following physical security devices is used to detect unauthorized server room access?

- A. Access badge
- B. Biometrics
- C. Smart card
- D. Video surveillance

Answer: D

NEW QUESTION 150

- (Exam Topic 1)

An assistant systems analyst reports the following findings of an investigation of slow Internet connections in a remote office to the senior systems analyst:

Device	CPU Utilization	Memory Utilization	Link Status
Router	5%	43%	Good
Firewall	92%	58%	Good
Switch 1	23%	32%	Good
Switch 2	8%	81%	Good

Which of the following devices is causing the issue?

- A. Router
- B. Firewall
- C. Switch 1
- D. Switch 2

Answer: B

NEW QUESTION 155

- (Exam Topic 1)

A network technician is attempting to troubleshoot a connectivity issue. The issue is only reported during the evening hours, and only a single workstation loses connectivity. Which of the following is the MOST likely cause of the issue?

- A. The router has time-based ACL applied for the network segment.
- B. A light source is creating EMI interface, affecting the UTP.
- C. Nightly backups are consuming excessive bandwidth.
- D. The user has violated the AUP, and Internet access has been restricted

Answer: D

NEW QUESTION 156

- (Exam Topic 1)

Which of the following can be done to implement network device hardening (Select TWO).

- A. Implement spanning tree
- B. Perform VLAN hopping
- C. Patch and update
- D. Perform backups
- E. Enable port mirroring
- F. Change default admin password

Answer: CF

Explanation:

Network devices come with default credentials, the username and password that enables you to log into the device for configuration. Changing default credentials should be the first step in hardening a new device. As with any other system, avoiding common passwords adds security.

Keep network devices up to date. That means upgrading firmware, patching and updating as necessary to close any security gaps exposed over time.

Services on network devices like routers include common things, like Telnet and HTTP access; and also things you don't normally see, like TCP and UDP small services, debugging and testing tools that primarily use ports 20 and lower. If enabled, these services can be used to launch DoS and other attacks. All modern Cisco devices have these disabled; Cisco's hardening rules insist on disabling unnecessary services.

Using secure protocols hardens network devices. Don't use Telnet to access a managed switch or router, for example, but use SSH so that the communication is encrypted.

Disabling unused ports on network devices enhances port security for access control. This includes standard IP ports and device ports, both physical and virtual for the latter.

NEW QUESTION 160

- (Exam Topic 1)

A technician needs to order cable that meets 10GBaseT and safety requirements for an installation between a drop ceiling and a standard ceiling. Which of the following should the technician order to ensure compliance with the requirements?

- A. PVC Cat 5
- B. Plenum Cat 5e
- C. Plenum Cat 6a
- D. PVC Cat 7

Answer: C

Explanation:

10GBaseT A 10 GbE standard designed to run on Cat 6a UTP cabling. Maximum cable length of 100 m.

NEW QUESTION 165

- (Exam Topic 1)

In which of the following scenarios should a technician use a cross-over cable to provide connectivity?

- A. PC to switch
- B. Switch to AP
- C. Router to switch
- D. Router to modem
- E. PC to PC

Answer: E

NEW QUESTION 166

- (Exam Topic 1)

A server in a LAN was configured to act as a gateway between all company computers and an external network. Which of the following network devices offers the ability to increase both performance and security?

- A. Load balancer
- B. IDS
- C. Proxy server
- D. Wireless controller

Answer: C

NEW QUESTION 170

- (Exam Topic 1)

A network administrator gets a call regarding intermittent network outages across the country. Which of the following should be used to connect to the network so the administrator can troubleshoot this issue from home? (Choose two.)

- A. FTP
- B. SMTP
- C. VPN
- D. SSH
- E. SNMP

Answer: CD

NEW QUESTION 173

- (Exam Topic 1)

A network technician is adding workstation to the enterprise network. After bringing the PCs online. The technician receives reports from random users that they cannot log on. The technician checks and finds everything is functioning for most users. Which of the following is MOST likely causing the problem?

- A. Exhausted DHCP scope
- B. DNS resolving
- C. Duplicate Mac address
- D. Incorrect ACL entry

Answer: C

NEW QUESTION 175

- (Exam Topic 1)

A technician is working on a new machine that has been procured for testing and development. The machine will run a hypervisor and host several operating systems of various types so the development team can test the company's applications in a variety of environments. The technician wants the virtual machines to be available to communicate with each other without leaving the hypervisor. Which of the following is the BEST solution to the problem?

- A. The technician should connect the machine to its own separate switch.
- B. The technician should add a route in each virtual machine to the default gateway.
- C. The technician should configure a virtual switch.
- D. The technician should set up individual routes between the machines.

Answer: C

NEW QUESTION 179

- (Exam Topic 1)

A network technician notices the site-to-site VPN and Internet connection have not come back up at a branch office after a recent power outage. Which of the following is an out-of-band method the technician would MOST likely utilize to check the branch office's router status?

- A. Use a modem to console into the router
- B. Walk a user through troubleshooting the connection
- C. Travel to the branch office
- D. Hire a contractor to go on-site

Answer: A

NEW QUESTION 181

- (Exam Topic 1)

Which of the following MUST be implemented to share metrics between routing protocols within the same router?

- A. Routing loop
- B. Routing table
- C. Route redistribution
- D. Dynamic routes

Answer: B

NEW QUESTION 183

- (Exam Topic 1)

The security manager reports that individual systems involved in policy or security violations or incidents cannot be located quickly. The security manager notices the hostnames all appear to be randomly generated characters. Which of the following would BEST assist the security manager identifying systems involved in security incidents?

- A. Enforce port security to require system authentication
- B. Implement a standardized UNC
- C. Label existing systems with current hostnames
- D. Forward the DHCP logs to the security manager every day

Answer: B

NEW QUESTION 184

- (Exam Topic 1)

A junior network technician receives a help desk ticket from an end user who is having trouble accessing a web application that was working the previous day. After talking with the end user and gathering information about issue, which of the following would be the most likely course of action for the technician to perform next?

- A. Establish a theory of probable cause.
- B. Escalate the ticket to a senior technician.
- C. Implement the solution.
- D. Document the findings and outcomes.

Answer: A

NEW QUESTION 186

- (Exam Topic 1)

A network technician is diagnosing a time-out issue generated from an end user's web browser. The web browser issues standard HTTP get and post commands to interact with the website. Given this information, the technician would like to analyze the entire TCP handshake of the HTTP requests offline. Which of the following tools would allow the technician to view the handshake?

- A. Packet analyzer
- B. Port analyzer
- C. SNMP traps
- D. Spectrum analyzer

Answer: A

NEW QUESTION 187

- (Exam Topic 1)

Which of the following ports should a network technician open on a firewall to back up the configuration and operating system files of a router to a remote server using the FASTES method possible?

- A. UDP port 22
- B. TCP port 22
- C. TCP port 25
- D. UDP port 53
- E. UDP port 69

Answer: E

NEW QUESTION 191

- (Exam Topic 1)

A network administrator configures a router with the following IP address information: Gigabit Ethernet 1 Interface: 10.10.0.1/24
Serial 0 Interface: 10.10.0.253/30

Clients are connected to a switch on the gigabit Ethernet interface; the ISP is connected to the Serial 0 interface. When the router configuration is complete and client devices are reconfigured, all clients report that they are unable to connect to the Internet. Which of the following is the MOST likely reason?

- A. The router was configured with an incorrect IP address
- B. The router was configured with an incorrect default gateway
- C. The router was configured with an incorrect subnet mask
- D. The router was configured with an incorrect loopback address

Answer: C

NEW QUESTION 192

- (Exam Topic 1)

A technician is configuring a printer for a client. The technician connects the printer to the network, but is unsure how to determine its switchport. Which of the following should the technician do FIRST to locate the switchport?

- A. Perform a DNS lookup on the server.
- B. Set up an SSH session to the desktop.
- C. Reference the ARP table in the router.
- D. Configure port security on the switch.

Answer: C

NEW QUESTION 196

- (Exam Topic 1)

A firewall administrator is implementing a rule that directs HTTP traffic to an internal server listening on a non-standard socket. Which of the following types of rules is the administrator implementing?

- A. NAT
- B. PAT
- C. STP
- D. SNAT
- E. ARP

Answer: B

NEW QUESTION 200

- (Exam Topic 1)

The process of attempting to exploit a weakness in a network after being given permission by the company is known as:

- A. penetration testing
- B. vulnerability scanning
- C. reconnaissance
- D. social engineering

Answer: A

NEW QUESTION 204

- (Exam Topic 1)

A network technician receives a call branch office about problem with its wireless connectivity. The user states the office is hosting ametting that includes some online training with local businesses. The guest users have all brought devices to connect to the guest network atBranch office. All users sre connected to a single WAP and are reporting that connections keep drooping and network speeds are unusable. Which of the following is the MOST likely cause of this issue?

- A. DHCP exhaustion
- B. Channel overlapping
- C. interference
- D. Overcapacity

Answer: D

NEW QUESTION 206

- (Exam Topic 1)

A contractor is setting up and configuring conference rooms for a convention. The contractor sets up each room in the conference center to allow wired Internet access going to individual tables. The contractor measured the distance between the hotel's patch panel to the jack, and the distance is within Cat 5e specifications. The contractor is concerned that the room will be out of specification if cables are run in each room from the wall jacks. Which of the following actions should the contractor take to ensure the cable runs meet specifications and the network functions properly?

- A. Place a switch at the hotel's patch panel for connecting each room's cables
- B. Place a switch on each table to ensure strong connectivity
- C. Place repeaters between the patch panel and the rooms
- D. place a switch at the wall jack and run the cables in the room from there

Answer: A

NEW QUESTION 211

- (Exam Topic 1)

The IT manager at a small firm is in the process of renegotiating an SLA with the organization's ISP. As part of the agreement, the organization will agree to a dynamic bandwidth plan to provide 150Mbps of bandwidth.

However, if the ISP determines that a host on the organization's internal network produces malicious traffic, the ISP reserves the right to reduce available bandwidth to 1.5 Mbps. Which of the following policies is being agreed to in the SLA?

- A. Session hijacking
- B. Blocking
- C. Throttling
- D. Data usage limits
- E. Bandwidth quotas

Answer: C

NEW QUESTION 212

- (Exam Topic 1)

A network administrator has a monitoring system in place that is currently polling hundreds of network devices at regular intervals. The continuous polling is causing high CPU utilization on the server. Which of the following tasks should the administrator perform to resolve the CPU issue while maintaining full monitoring capabilities?

- A. Remove SNMP polling and configure SNMP traps on each network device
- B. Remove SNMP polling and implement snmpwalk on each network device
- C. Upgrade SNMP to the latest version to mitigate vulnerabilities
- D. Modify SNMP polling to poll only during business hours

Answer: A

NEW QUESTION 213

- (Exam Topic 1)

Which of the following WAN technologies utilizes the concept of virtual circuits and point-multipoint connections?

- A. ISDN
- B. MPLS
- C. PRI
- D. Broadband cable
- E. Frame relay

Answer: E

NEW QUESTION 218

- (Exam Topic 1)

An employee wishes to use a personal cell phone for work-related purposes, including storage of sensitive company data, during long business trips. Which of the following is needed to protect BOTH the employee and the company?

- A. An NDA ensuring work data stored on the personal phone remains confidential
- B. An AUP covering how a personal phone may be used for work matters
- C. A consent to monitoring policy covering company audits of the personal phone
- D. Real-time remote monitoring of the phone's activity and usage

Answer: D

NEW QUESTION 220

- (Exam Topic 1)

After a server outage, a technician discovers that a physically damaged fiber cable appears to be the problem. After replacing the cable, the server will still not connect to the network. Upon inspecting the cable at the server end, the technician discovers light can be seen through one of the two fiber strands. Which of the following should the technician do FIRST to reconnect the server to the network?

- A. Reverse the fiber strands of the cable and reconnect them to the server
- B. Use a TDR to test both strands of a new replacement cable prior to connecting it to the server
- C. Replace the server's single-mode fiber cable with multimode fiber
- D. Move the fiber cable to different port on the switch where both strands function

Answer: A

NEW QUESTION 221

- (Exam Topic 1)

A network security technician observes multiple attempts to scan network hosts and devices. All the attempts originate from a single host on the network. Which of the following threats is MOST likely involved?

- A. Smurf attack
- B. Rogue AP
- C. Compromised system
- D. Unintentional DoS

Answer: C

NEW QUESTION 222

- (Exam Topic 1)

A technician is trying to determine the IP address of a customer's router. The customer has an IP address of 192.168.1.55/24. Which of the following is the address of the customer's router?

- A. 192.168.0.55
- B. 192.168.1.0
- C. 192.168.1.1
- D. 192.168.5.5
- E. 255.255.255.0

Answer: C

NEW QUESTION 226

- (Exam Topic 1)

Which of the following BEST describes the differences between VLAN hopping and session hijacking?

- A. VLAN hopping involves the unauthorized transition from one VLAN to another to gain additional access
- B. Session hijacking involves overriding a user's web connection to execute commands
- C. VLAN hopping is a brute force attack executed to gain additional access
- D. Session hijacking involves physically disrupting a network connection
- E. VLAN hopping involves overriding a user network connection to execute malicious command
- F. Session hijacking involves compromising a host to elevate privileges
- G. VLAN hopping is the act of exploiting poor VLAN tagging
- H. Session hijacking is a web-based attack aimed at privilege escalation

Answer: A

NEW QUESTION 228

- (Exam Topic 1)

A network administrator wants to increase the confidentiality of the system by hardening the authentication process. Currently, the users log in using usernames and passwords to access the system. Which of the following will increase the authentication factor to three?

- A. Adding a fingerprint reader to each workstation and providing a RSA authentication token
- B. Adding a fingerprint reader and retina scanner
- C. Using a smart card and RSA token
- D. Enforcing a stronger password policy and using a hand geometry scan

Answer: A

NEW QUESTION 229

- (Exam Topic 1)

A network administrator wants to employ a username and password authentication system for guest WiFi. Which of the following is the BEST option to provide this type of authentication?

- A. port security
- B. MAC filtering
- C. Network access control
- D. Captive portal

Answer: D

NEW QUESTION 234

- (Exam Topic 1)

A small business developed an in-house application that is very sensitive to network latency when communicating between servers. Due to a lack of funds, the business had to build its own network for workstations and servers. Now a network administrator must redesign the network due to performance issues with the application. Which of the following would be the MOST cost effective for the administrator to recommend?

- A. Create Ethernet VLANs
- B. Disable autonegotiation on the servers
- C. Install 10Gb Ethernet NICs in the servers
- D. Install Fibre Channel for the server network

Answer: C

NEW QUESTION 237

- (Exam Topic 1)

Which of the following is recognized as the SMALLEST network type?

- A. SAN
- B. CAN
- C. PAN
- D. LAN

Answer: C

Explanation:

PAN is definitively the smallest type of network you can currently use and the name comes from Personal Area Network. You've probably used this in the last week without even knowing it.

<http://compinfofro.com/types-of-network-pan-man-wlan-san-can-dan/>

NEW QUESTION 239

- (Exam Topic 1)

An analyst is developing a proof of concept of a wireless-based attack as part of a penetration test against an organization's network. As part of the attack, the analyst launches a fake access point matching the SSID of the organization's guest access network. When a user connects to the fake access point, the analyst allows the traffic to flow through the access point to the legitimate site while the data traversing the network is logged for latest analysis and exploitation. Which of the following attacks has the analyst successfully performed in this scenario?

- A. Bluesnarfing
- B. Session hijacking
- C. MAC spoofing
- D. VLAN hopping
- E. Man-in-the-middle

Answer: E

NEW QUESTION 243

- (Exam Topic 1)

A technician is investigating a server performance issue. The technician has gathered the server utilization statistics. Which of the following should the technician use to determine which statistics are not in the normal range?

- A. Baseline review
- B. Vulnerability scan
- C. System life-cycle report
- D. Archiving logs

Answer: A

NEW QUESTION 244

- (Exam Topic 1)

A network technician notices the site-to site VPN and internet connection have back up at a branch office' after a recent power outage. Which of the following is an out-of-band method the technician the would MOST likely utilize to check the branch office's router status?

- A. Use a modem to console into router.
- B. Walk to the branch troubleshooting the connection.
- C. Travel to the branch office.
- D. Hire a contractor to go on-site.

Answer: B

NEW QUESTION 245

- (Exam Topic 1)

A technician is replacing a failed SOHO router for a customer who has an existing, cable modem, and static IP address. The user has a web server that faces the Internet so users can visit and leave comments. Which of the following BEST describes the correct configuration for this customer's requirements?

- A. The modem is placed in bridge mode, the router is placed behind the modem, and the web server is placed behind the router.
- B. The router is place in bridge in mode, the modem is placed behind the router, and the web server ids placed behind the modem.
- C. the web server is placed in bridge mode, the router is placed behind the server, and the modem is placed behind the router.
- D. The switch is placed in bridge mode, the modem is placed behind the switch, and the router is placed behind the modem.

Answer: A

NEW QUESTION 248

- (Exam Topic 1)

Which of the following are DNS record type? (Select THREE).

- A. CNAME
- B. NTP
- C. PTR
- D. LDAP
- E. DHCP
- F. TTL
- G. SRV
- H. SSH

Answer: ACG

NEW QUESTION 249

- (Exam Topic 1)

Which of the following VPN protocols establishes a secure session that can be initiated using a browser?

- A. IPSec
- B. SSL VPN
- C. PTP
- D. PPTP

Answer: B

NEW QUESTION 253

- (Exam Topic 1)

While working on a Linux-based OS, a technician experiences an issue accessing servers and some sites by name. Which of the following command-line tools should the technician use to assist in troubleshooting?

- A. dig
- B. iptables
- C. ifconfig
- D. traceroute

Answer: A

NEW QUESTION 255

- (Exam Topic 1)

A network technician is installing a new SOHO branch office that requires the use of a DOCSIS-compatible. The modem needs to be connected to the ISP's network at the demark. Which of the following cable type should be used?

- A. UTP
- B. Multimode
- C. Coaxial
- D. Serial

Answer: C

NEW QUESTION 257

- (Exam Topic 1)

A technician is setting up a branch office on a point-to-point connection. Which of the following IP network blocks is the MOST efficient use of IP address space for the router connections between the two sites?

- A. /24
- B. /25
- C. /30
- D. /32

Answer: C

NEW QUESTION 259

- (Exam Topic 1)

A switch has detected duplicate broadcast messages sourced from a second port. The broadcasts continue to be transmitted and duplicated until the amount of traffic causes severe performance issues. Which of the following should be configured to prevent this behavior?

- A. BPDU guard
- B. DHCP snooping
- C. ARP protection
- D. Spanning tree

Answer: D

NEW QUESTION 264

- (Exam Topic 1)

A building is equipped with light sensors that turn off the fluorescent lights when natural light is above a certain brightness. Users report experiencing network connection issues only during certain hours. The west side of the building experiences connectivity issues in the morning hours and the east side near the end of the day. At night the connectivity issues affect the entire building. Which of the following could be the cause of the connectivity issues?

- A. Light sensors are interfering with the network
- B. EMI from the lights is interfering with the network cables
- C. Network wiring is run perpendicular to electrical conduit
- D. Temperature changes are causing attenuation in copper cabling

Answer: C

NEW QUESTION 269

- (Exam Topic 1)

Which of the following DNS record types allows IPv6 records to be resolved to DNS names?

- A. PTR
- B. A
- C. AAAA
- D. SRV

Answer: C

NEW QUESTION 271

- (Exam Topic 1)

A technician is connecting a PC to a switchport. At the wiring closet, the technician is identify which cable goes from patch panel a connected to the switch to patch panel B connected to the PC. Which of the following tools should the technician use to resolve the issue?

- A. Cable tester
- B. Multimeter
- C. Tone generator
- D. OTDR

Answer: C

NEW QUESTION 275

- (Exam Topic 1)

When choosing a type of storage that integrates with the existing network infrastructure, the storage must be easily configurable to share files and can communicate with all existing clients over TCP/IP. Which of the following is the BEST technology for the network administrator to implement?

- A. iSCSI
- B. Fibre Channel
- C. NAS
- D. DAS

Answer: C

NEW QUESTION 276

- (Exam Topic 1)

Which of the following is a system of notation that uses base 16 rather than base 10?

- A. Hex
- B. Octal
- C. Binary
- D. CIDR

Answer: A

NEW QUESTION 280

- (Exam Topic 1)

ACHief Information Officer (CIO) wants to move some IT services to a cloud service offering. However, the network administrator still wants to be able to control some parts of the cloud service's networking components. Which of the following should be leveraged to complete this task?

- A. IaaS
- B. PaaS
- C. SaaS
- D. DaaS

Answer: B

NEW QUESTION 281

- (Exam Topic 1)

Which of the following protocols can be both connection-oriented and connectionless?

- A. 20 FTP
- B. 53 DNS
- C. 67 DHCP
- D. 80 HTTP

Answer: B

NEW QUESTION 286

- (Exam Topic 1)

A network technician is assisting the security team with some traffic captures. The security team wants to capture all traffic on a single subnet between the router and the core switch. To do so, the team must ensure there is only a single collision and broadcast domain between the router and the switch from which they will collect traffic. Which of the following should the technician install to BEST meet the goal?

- A. Bridge
- B. Crossover cable
- C. Hub
- D. Media converter

Answer: C

NEW QUESTION 289

- (Exam Topic 1)

A chief information Officer (CIO) tasks the network engineer with protecting the network from outside attacks. Placing which of the following devices on the network perimeter would provide the MOST security for the system?

- A. Firewall
- B. NGFW

- C. Content filter
- D. IDS/PS

Answer: B

NEW QUESTION 293

- (Exam Topic 1)

An end-user device requires a specific IP address every time it connects to the corporate network; however, corporate policy does not allow the use of static IP addresses. Which of the following will allow the request to be fulfilled without breaking the corporate policy?

- A. DHCP relay
- B. DHCP exclusion
- C. DHCP option
- D. DHCP reservation

Answer: D

NEW QUESTION 295

- (Exam Topic 1)

Client PCs are unable to receive addressing information from a newly configured interface on a router. Which of the following should be added to allow the clients to connect?

- A. DHCP lease me
- B. IP helper
- C. TTL
- D. DNS record type

Answer: B

NEW QUESTION 299

- (Exam Topic 1)

A technician has been alerted of incoming HTTP traffic on the LAN segment that should not contain any web server's The technician has the IP address of the destination host and wants to determine if the socket for HTTP is open. Which of the following should the technician perform?

- A. Baseline assessment
- B. packet analysis
- C. portscan
- D. Patch-level assessment.

Answer: C

NEW QUESTION 300

- (Exam Topic 1)

A network technician has created a network that consists of a router, a firewall, a switch, and several PCs. Which of the following physical network topologies was created?

- A. Star
- B. Mesh
- C. Ring
- D. Bus

Answer: D

NEW QUESTION 304

- (Exam Topic 1)

Which of the following networking devices operates at Layer1?

- A. Router
- B. Firewall
- C. Hub
- D. Bridge

Answer: C

NEW QUESTION 306

- (Exam Topic 1)

A network technician is troubleshooting an end-user connectivity problem. The network technician goes to the appropriate IDF but is unable to identify the appropriate cable due to poor labeling. Which of the following should the network technician use to help identify the appropriate cable?

- A. Tone generator
- B. Multimeter
- C. OTDR
- D. Loopback adapter

Answer: A

NEW QUESTION 309

- (Exam Topic 1)

A company is allowing its employees to use their personal computers, tables, and IoT devices while at work. However, there are rules and guidelines to which employees must adhere. Which of the following documents applies to these employees?

- A. NDA
- B. SOP
- C. BYOD
- D. SLA

Answer: C

NEW QUESTION 311

- (Exam Topic 1)

A network technician needs to connect to a remote router to modify the configuration, Which of the following method should the technician use to connected to the device security? (Select TWO)

- A. Telnet
- B. VNC
- C. SSH
- D. RDP
- E. HTTPS
- F. TFTP

Answer: BC

NEW QUESTION 314

- (Exam Topic 1)

Which of the following WAN technologies is MOST preferred when developing a VoIP system with 23 concurrent channels?

- A. DSL
- B. POTS
- C. T1
- D. DOCSIS

Answer: C

NEW QUESTION 317

- (Exam Topic 1)

The Chief Executive Officer's (CEO's) tablet cannot connect to the wireless network from the corner office. A network technician verified the tablet can connect to the wireless network in other areas of the building. The distance between the office and the 802.11ac WAP is 150ft (46m), and there are a few cubicles in between. Which of the following is the MOST likely cause of the tablet not connecting?

- A. Absorption
- B. Reflection
- C. Distance
- D. Refraction
- E. Attenuation

Answer: C

NEW QUESTION 319

- (Exam Topic 1)

A network technician needs to separate a web server listening on port 80 from the internal LAN and secure the server from the public Internet. The web server should be accessible to the public Internet over port 80 but not the private LAN. Currently, the network is segmented with a network-based firewall using the following IP addressing scheme on each interface:

Zone	Interface	IP Address
Public	eth0	10.0.0.1/24
DMZ	eth1	10.0.1.1/24
Private	eth2	10.0.2.1/24

Which of the following ones should the technician use to place the web server and which of the following firewall rules should the technician configure?

- A. Place the web server in the public zone with an inbound rule from eth0 interface to accept traffic over port 80 designated to the web server
- B. Place the web server in the DMZ with an inbound rule from eth0 interface to eth1 to accept traffic over port 80 designated to the web server
- C. Place the web server in the private zone with an inbound rule from eth2 interface to eth1 to accept traffic over port 80 designated to the web server
- D. Place the web server in the DMZ with an inbound rule from eth1 interface to eth0 to accept traffic over port 80 designated to the web server

Answer: B

NEW QUESTION 320

- (Exam Topic 1)

A technician has racked a new access switch and has run multimode fiber to a new location. After installing an extended-range 10Gb SFP in the core switch, the technician installed a 10Gb SFP in the access switch and connected the port to the new extension with a fiber jumper. However, the link does not display, and the

technician cannot see light emitting from the core switch. Which of the following solutions is MOST likely to resolve the problem?

- A. Swap the fiber pairs in one of the SFPs
- B. Replace the jumpers with single-mode fiber
- C. Set the correct MTU on the new interface
- D. Install an optic that matches the fiber type

Answer: B

NEW QUESTION 324

- (Exam Topic 1)

Which of the following would allow a network technician to access files on a remote system? (Select TWO).

- A. FTP
- B. TFTP
- C. VLSM
- D. SIP
- E. SMTP
- F. IMAP

Answer: AB

NEW QUESTION 329

- (Exam Topic 1)

Which of the following concepts would BEST describe when a company chooses to use a third-party vendor to host and administer critical application?

- A. SaaS
- B. IaaS
- C. PaaS
- D. CASB

Answer: C

NEW QUESTION 333

- (Exam Topic 1)

A second router was installed on a network to be used as a backup for the primary router that works as a gateway. The infrastructure team does not want to change the IP address of the gateway on the devices. Which of the following network components should be used in this scenario?

- A. Loopback IP
- B. Virtual IP
- C. Reserved IP
- D. Public

Answer: B

NEW QUESTION 335

- (Exam Topic 1)

A web application is unable to authenticate customers so they can access their bills. The server administrator has tested the LDAP query but is not receiving results. Which of the following is the NEXT step the server administrator should take to correct the problem?

- A. Check port 636 to see if it being blocked.
- B. Change service port 636 to port 389.
- C. Restart the web server.
- D. Verify the browser is using port 443.

Answer: A

NEW QUESTION 340

- (Exam Topic 1)

A network technician receives a spool of Cat 6a cable and is asked to build several cables for a new set of Ethernet runs between devices. Which of the following tools are MOST likely needed to complete the task? (Choose three.)

- A. Wire stripper
- B. Cable crimper
- C. RJ-11 connectors
- D. RJ-45 connectors
- E. Multimeter
- F. Punchdown tool
- G. Tone generator

Answer: ABD

NEW QUESTION 341

- (Exam Topic 1)

A technician wants to deploy a network that will require wireless client devices to prompt for a username and password before granting access to be the wireless network. Which of the following must be configured to implement this solution?

- A. EAP-PEAP
- B. CCMP-AES
- C. WPA2-PSK
- D. TKIP-RC4

Answer: A

NEW QUESTION 343

- (Exam Topic 2)

Which of the following default ports would need to be disabled to block TFTP traffic?

- A. 20
- B. 21
- C. 69
- D. 123

Answer: C

NEW QUESTION 346

- (Exam Topic 2)

Tenants access multiple wireless networks in a building. Users report intermittent connectivity. Which of the following is the MOST likely cause of the problem?

- A. The channels are overlapping with other wireless networks and should be changed.
- B. The SSIDs are incompatible and should be renamed.
- C. The users have incompatible wireless network cards and should upgrade.
- D. The default idle period for logoff is too short and should be changed to a longer limit.

Answer: A

NEW QUESTION 349

- (Exam Topic 2)

Which of the following uses port 53 by default?

- A. RDP
- B. QoS
- C. DHCP
- D. DNS

Answer: D

NEW QUESTION 353

- (Exam Topic 2)

Lisa, a technician, is asked to not allow FTP traffic on a network. Which of the following ports should be blocked on the firewall to achieve this?

- A. 21
- B. 22
- C. 23
- D. 25

Answer: A

NEW QUESTION 358

- (Exam Topic 2)

Which of the following uses types and codes rather than ports?

- A. EIGRP
- B. ICMP
- C. UDP
- D. IPv6

Answer: B

NEW QUESTION 363

- (Exam Topic 2)

Which of the following mediums is circuit switched?

- A. PSTN
- B. ATM
- C. Frame relay
- D. MPLS

Answer: A

NEW QUESTION 364

- (Exam Topic 2)

Which of the following cable types have a rated MAXIMUM bandwidth of 100Mbps?

- A. CAT3
- B. CAT5
- C. CAT5e
- D. CAT6

Answer: B

NEW QUESTION 365

- (Exam Topic 2)

Which of the following is true about tunneling and encryption?

- A. SIP encrypts all data going through the tunnel.
- B. PPTP creates a secure tunnel.
- C. SSL VPN provides a secure tunnel.
- D. RAS is a secure way to create a tunnel.

Answer: C

NEW QUESTION 368

- (Exam Topic 2)

Which of the following has a maximum transfer rate of 54Mbps and operates at the 5GHz frequency?

- A. 802.11a
- B. 802.11b
- C. 802.11g
- D. 802.11n

Answer: A

NEW QUESTION 369

- (Exam Topic 2)

Which of the following is a secure way to connect to a device?

- A. RSH
- B. TFTP
- C. SNMPv2
- D. SFTP

Answer: D

NEW QUESTION 372

- (Exam Topic 2)

A company has just installed wireless in their office. In one corner of the office building users are not able to establish a connection. Which of the following can be changed on the AP to help resolve this issue?

- A. SSID
- B. Channels
- C. Signal strength
- D. Encryption

Answer: C

NEW QUESTION 375

- (Exam Topic 2)

A workstation on the network is configured as follows. A user reports that they are unable to print to a device located on a different subnet. Which of the following is the MOST likely problem?

IP address: 172.16.204.12
Subnet Mask: 255.255.0.0
Default Gateway: 172.15.204.254
DNS address: 172.16.204.1
Broadcast address: 172.16.255.255

- A. DNS address
- B. Subnet mask
- C. Default gateway
- D. Broadcast address
- E. IP address

Answer: C

NEW QUESTION 379

- (Exam Topic 2)

Use of group accounts should be minimized to ensure which of the following?

- A. Password security

- B. Regular auditing
- C. Baseline management
- D. Individual accountability

Answer: D

NEW QUESTION 383

- (Exam Topic 2)

Which of the following devices should be installed on a network to monitor the presence of and actively defend against attacks?

- A. An IPS
- B. A protocol analyzer
- C. A traffic shaper
- D. An IDS

Answer: A

NEW QUESTION 384

- (Exam Topic 2)

Which of the following are network topologies? (Select TWO).

- A. Ethernet
- B. Duplex
- C. Star
- D. Circular
- E. Bus

Answer: CE

NEW QUESTION 385

- (Exam Topic 2)

Which of the following provides the MOST protection against zero day attacks via email attachments?

- A. Anti-spam
- B. Anti-virus
- C. Host-based firewalls
- D. Patch management

Answer: A

NEW QUESTION 387

- (Exam Topic 2)

Which of the following BEST describes how a layer 2 switch functions?

- A. Switches packets within the same subnet based on MAC addresses
- B. Switches packets between different subnets based on IP addresses
- C. Switches packets between different subnets based on MAC addresses
- D. Switches packets between different subnets based on MAC addresses

Answer: A

NEW QUESTION 390

- (Exam Topic 2)

Which of the following ports would have to be allowed through a firewall to allow SNMP traffic to pass on its default port? (Select TWO).

- A. 22
- B. 23
- C. 143
- D. 161
- E. 162
- F. 8080

Answer: DE

NEW QUESTION 394

- (Exam Topic 2)

Lisa, a network administrator, needs to allow all websites to be accessible by the sales team for business purposes. Which of the following ports need to be enabled on the firewall? (Select TWO).

- A. 23
- B. 25
- C. 53
- D. 80
- E. 443

Answer: DE

NEW QUESTION 399

- (Exam Topic 2)

A computer on VLAN 10 with the IP address of 192.168.1.45/27 cannot ping a computer on VLAN 20 with the IP address of 192.168.1.65/27. Which configuration change will allow the PING to be successful?

- A. Replace the router with a Layer 2 switch that supports VLANs
- B. Change VLAN 20 computers Default Gateway to 192.168.1.127/27
- C. Change VLAN 10 computers Default Gateway to 192.168.1.32/27
- D. Allow ICMP to pass through the Router

Answer: D

NEW QUESTION 402

- (Exam Topic 2)

Which of the following is a purpose of a VLAN?

- A. Decreases bandwidth on a network
- B. Segments broadcast traffic
- C. Increases port speed
- D. Allows another connection to the router

Answer: B

NEW QUESTION 407

- (Exam Topic 2)

Which of the following defines an IP address that is NOT routed on the Internet?

- A. Multicast
- B. Public
- C. Private
- D. Classful

Answer: C

NEW QUESTION 411

- (Exam Topic 2)

Which of the following is a proprietary routing protocol?

- A. RIP
- B. EIGRP
- C. OSPF
- D. BGP

Answer: B

NEW QUESTION 413

- (Exam Topic 2)

Privilege creep among long-term employees can be mitigated by which of the following procedures?

- A. User permission reviews
- B. Mandatory vacations
- C. Separation of duties
- D. Job function rotation

Answer: A

NEW QUESTION 414

- (Exam Topic 2)

An organization recently installed a firewall on the network. Employees must have access to their work computer from their home computer. In which of the following ways should the firewall be configured?

- A. Allow TCP port 3389 outbound
- B. Allow UDP port 3389 inbound
- C. Allow UDP port 3389 outbound
- D. Allow TCP port 3389 inbound

Answer: D

NEW QUESTION 415

- (Exam Topic 2)

A technician is troubleshooting a problem with a network printer. The technician thinks the network printer is out of paper and ink. Which of the following should the technician do NEXT?

- A. Implement the solution
- B. Question users
- C. Test the theory
- D. Escalate the problem

Answer: C

NEW QUESTION 417

- (Exam Topic 2)

Which of the following will allow multiple frequencies to be combined?

- A. WiMAX
- B. MPLS
- C. MIMO
- D. Channel bonding

Answer: D

NEW QUESTION 418

- (Exam Topic 2)

Which of the following routing protocols relies on hop count as its ONLY metric?

- A. BGP
- B. EIGRP
- C. OSPF
- D. RIP

Answer: D

NEW QUESTION 420

- (Exam Topic 2)

Which of the following MUST be used when securing a VoIP network consisting of private IP addresses?

- A. IPS
- B. Application layer firewall
- C. IDS
- D. An unmanaged switch

Answer: B

NEW QUESTION 421

- (Exam Topic 2)

Which of the following wireless standards is capable of ONLY operating on 5.8GHz?

- A. 802.11a
- B. 802.11b
- C. 802.11g
- D. 802.11n

Answer: A

NEW QUESTION 423

- (Exam Topic 2)

Kim, a network technician, is installing an 802.11n network. Which of the following should Kim enable to ensure that the network only allows 802.11n clients?

- A. Name the SSID on the 802.11n network only
- B. Limit the DHCP address pool
- C. Disable 802.11b and 802.11g
- D. Only use WPA encryption

Answer: C

NEW QUESTION 426

- (Exam Topic 2)

Which of the following cables is MOST likely to be terminated into a patch panel?

- A. Serial
- B. RG-6
- C. RG-59
- D. CAT6

Answer: D

NEW QUESTION 428

- (Exam Topic 2)

When querying a DNS server for an AAAA record, which of the following is an appropriate response?

- A. 192.168.2.1
- B. 00:f3:82:99:a2:b8
- C. 61.23.168.192.in-addr.arpa

D. 3ffe:1900:4545:3:200:f8ff:fe21:67cf

Answer: D

NEW QUESTION 433

- (Exam Topic 2)

Which of the following is indicative of an FTP bounce?

- A. Arbitrary IP address
- B. Reverse DNS lookups
- C. Same Port Number
- D. File Transfer Success

Answer: A

NEW QUESTION 437

- (Exam Topic 2)

Which of the following functions would be used to securely monitor and actively manage external connections?

- A. VPN concentrator
- B. HIDS
- C. Load balancer
- D. Packet shaper

Answer: A

NEW QUESTION 438

- (Exam Topic 2)

Which of the following access controls enforces permissions based on data labeling at specific levels?

- A. Mandatory access control
- B. Separation of duties access control
- C. Discretionary access control
- D. Role based access control

Answer: A

NEW QUESTION 440

- (Exam Topic 2)

Kim, a user, took a laptop on vacation and made changes to the configuration in order to use the device at the hotel. She can reach the Internet, but cannot access any internal network resources.

Which of the following is the MOST likely reason?

- A. Incorrect DNS
- B. Incorrect subnet mask
- C. Duplicate IP address
- D. Incorrect SSID

Answer: A

NEW QUESTION 445

- (Exam Topic 2)

An administrator is receiving reports from an executive that the executive's wireless access point loses the signal frequently, even though the WAP is on the executive's desk. The office contains four other 802.11n access points. Which of the following would MOST likely correct interference problems in the executive's office?

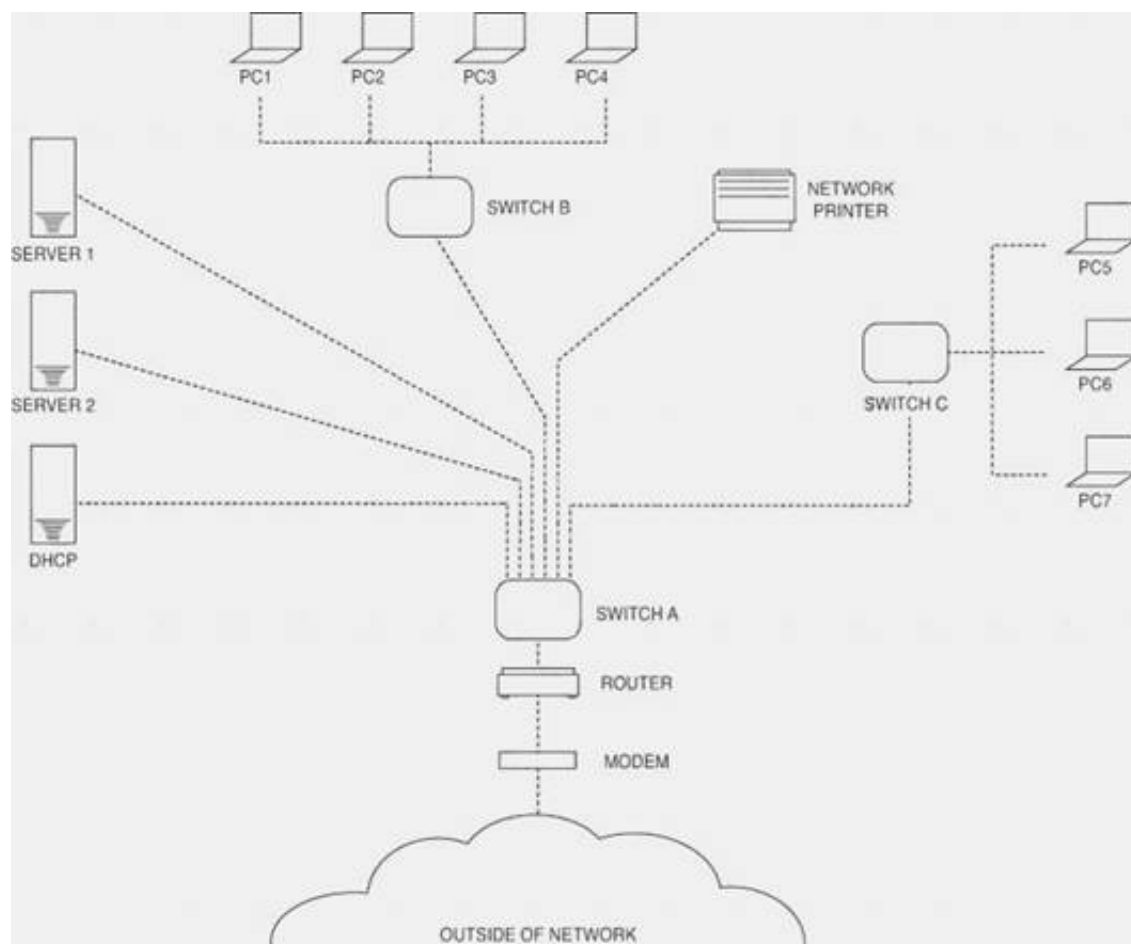
- A. Turn off SSID broadcasting for the executive's access point
- B. Replace the 802.11n access point in the office with an 802.11a access point.
- C. Change the channel on the access point to channel 11.
- D. Turn off as many lights in the executive's office as possible to reduce interference.

Answer: C

NEW QUESTION 449

- (Exam Topic 2)

Please refer to the attached exhibit. Which of the following types of configuration management documentation is represented?



- A. Network security policy
- B. Network baseline
- C. Logical network diagram
- D. Wiring schematic

Answer: C

NEW QUESTION 454

- (Exam Topic 2)

Which of the following default services uses TCP/UDP port 88?

- A. LDAP
- B. IGMP
- C. HTTP
- D. Kerberos

Answer: D

NEW QUESTION 458

- (Exam Topic 2)

Which of the following standards can operate at both the 2.4GHz and 5GHz frequencies?

- A. 802.11a
- B. 802.11b
- C. 802.11g
- D. 802.11n

Answer: D

NEW QUESTION 463

- (Exam Topic 2)

Which of the following subnet masks would allow for 192.168.0.3 and 192.168.0.240 to be in the same subnet?

- A. 255.255.255.0
- B. 255.255.255.128
- C. 255.255.255.192
- D. 255.255.255.248

Answer: A

NEW QUESTION 464

- (Exam Topic 2)

Which of the following network devices restricts traffic based on words, signatures, and URLs?

- A. Layer 2 switch
- B. Content filter
- C. Load balancer
- D. Traffic analyzer

Answer: B

NEW QUESTION 467

- (Exam Topic 2)

Which of the following allows a central point to simultaneously address other points without addressing all of them?

- A. Multicast
- B. Subnetting
- C. Unicast
- D. Broadcast

Answer: A

NEW QUESTION 468

- (Exam Topic 2)

A user is unable to print to a network printer. Which of following is the FIRST step that a technician should take to troubleshoot the issue?

- A. Identify the problem.
- B. Establish a plan of action to resolve the problem.
- C. Establish a theory of probable cause.
- D. Implement preventative measures.

Answer: A

NEW QUESTION 472

- (Exam Topic 2)

Which of the following protocols would be used to send email to an email server?

- A. NTP
- B. FTP
- C. SNMP
- D. SMTP

Answer: D

NEW QUESTION 475

- (Exam Topic 2)

Which of the following ports does DHCP use? (Select TWO).

- A. 22
- B. 23
- C. 67
- D. 68
- E. 69

Answer: CD

NEW QUESTION 480

- (Exam Topic 2)

A VoIP line will MOST likely have which of the following connectors?

- A. RJ-11
- B. DB-25
- C. BNC
- D. RJ-45

Answer: D

NEW QUESTION 483

- (Exam Topic 2)

Which of the following is a routed protocol that functions at layer 3 of the OSI model?

- A. IP
- B. Frame relay
- C. PPP
- D. ADSL

Answer: A

NEW QUESTION 486

- (Exam Topic 2)

Which of the following is based ENTIRELY on using ICMP packets?

- A. Social engineering
- B. NMAP
- C. Buffer overflow attack
- D. Smurf attack

Answer: D

NEW QUESTION 488

- (Exam Topic 2)

Which of the following network topologies allows only communication to take place from one node at a time by passing a token around the network?

- A. Star
- B. Mesh
- C. Bus
- D. Ring

Answer: D

NEW QUESTION 491

- (Exam Topic 2)

A username provides which of the following?

- A. Biometrics
- B. Identification
- C. Authorization
- D. Authentication

Answer: B

NEW QUESTION 496

- (Exam Topic 2)

Which of the following ports should be allowed through a firewall to allow DNS resolution to occur to an outside DNS server?

- A. 20
- B. 53
- C. 80
- D. 3389

Answer: B

NEW QUESTION 498

- (Exam Topic 2)

Something you have, something you are, and something you know are the three tenets of:

- A. Social engineering
- B. Change management
- C. Remote access
- D. Access control

Answer: D

NEW QUESTION 503

- (Exam Topic 2)

Which of the following DNS records would allow for a website to have more than one FQDN?

- A. TXT
- B. PTR
- C. MX
- D. CNAME

Answer: D

NEW QUESTION 504

- (Exam Topic 2)

Which of the following describes a DNS server?

- A. Translates an IP address to a name
- B. Caches commonly viewed web pages
- C. Assigns IP addresses to network devices
- D. Provides port security for a network

Answer: A

NEW QUESTION 507

- (Exam Topic 2)

Which of the following protocols uses port 3389?

- A. IMAP
- B. DHCP
- C. SSH

D. RDP

Answer: D

NEW QUESTION 512

- (Exam Topic 2)

Which of the following commands will display the associated IP address of a network adapter in Windows and Linux environments? (Select TWO).

- A. dig
- B. nslookup
- C. nbstat
- D. ifconfig
- E. ipconfig

Answer: DE

NEW QUESTION 513

- (Exam Topic 3)

Which of the following would Kim, a technician, do to monitor remote traffic through an access point?

- A. Enable an SNMP agent
- B. Enable network mapping
- C. Set monitoring SSID
- D. Select WPA2

Answer: A

NEW QUESTION 515

- (Exam Topic 3)

A new monitoring device is installed in the network that uses ping to determine whether critical network Internet routers are up. After three missing pings, the alarm reports the device is down. The device is now constantly reporting alarms, yet there are no reported Internet problems from users. Which of the following is the MOST likely cause?

- A. A missing route on the alarm device.
- B. Incorrect VLAN assignment on the router.
- C. A missing route on the network routers.
- D. Incorrect speed/duplex setting on the alarm device.

Answer: D

NEW QUESTION 516

- (Exam Topic 3)

When configuring a wireless access point, Zach, a network administrator, needs to determine the MAC address of a local printer. Which of the following commands would be MOST helpful in determining the MAC address?

- A. ping
- B. arp
- C. route
- D. dig

Answer: B

NEW QUESTION 519

- (Exam Topic 3)

Kim, a technician, needs to locate a cable in an unorganized wiring closet. Which of the following tools will help her locate the cable?

- A. Protocol analyzer
- B. Cable tester
- C. Toner probe
- D. Punch down tool

Answer: C

NEW QUESTION 524

- (Exam Topic 3)

A user has no network connectivity. Jeff, the network technician, is unable to locate the CAT5e cable from the user at the IDF. Which of the following tools would be used to assist Jeff in locating the CAT5e cable?

- A. Butt set
- B. Punch down tool
- C. Toner probe
- D. Protocol analyzer

Answer: C

NEW QUESTION 525

- (Exam Topic 3)

A network administrator notices that all of the company switches are running at capacity on a given day, which is abnormal according to network baselines taken recently. Which tool would BEST allow the administrator to inspect what type of traffic is on the network?

- A. Wire tap
- B. Network sniffer
- C. Load balancing appliance
- D. NIPS

Answer: B

NEW QUESTION 530

- (Exam Topic 3)

A company is experiencing accessibility issues reaching services on a cloud-based system. Which of the following monitoring tools should be used to locate possible outages?

- A. Network analyzer
- B. Packet analyzer
- C. Protocol analyzer
- D. Network sniffer

Answer: A

Explanation:

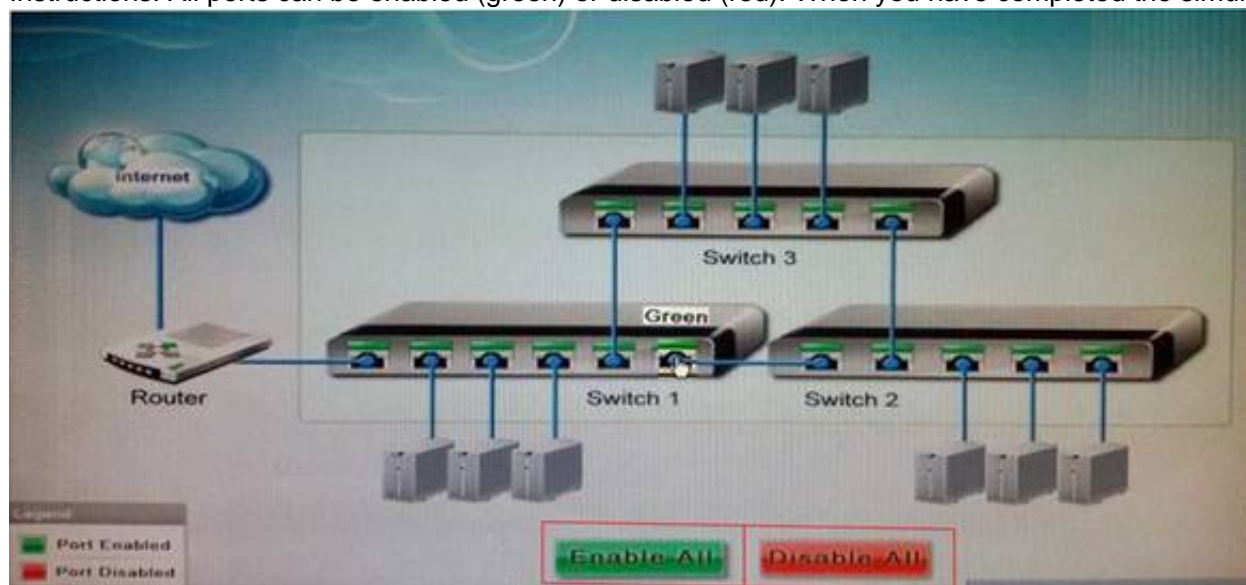
A network analyzer is a useful tool, helping you do things like track traffic and malicious usage on the network.

NEW QUESTION 535

- (Exam Topic 3)

Workstations are unable to access the Internet after a recent power outage. Configure the appropriate devices to ensure ALL workstations have Internet connectivity.

Instructions: All ports can be enabled (green) or disabled (red). When you have completed the simulation please select the Done button.



- A. Mastered
- B. Not Mastered

Answer: A

Explanation:

All ports should be enabled.

NEW QUESTION 537

- (Exam Topic 3)

A customer has not been using security on a wireless network and has recently received many attacks through this vector. Which of the following would be the MOST secure way to harden this wireless network?

- A. Disable the SSID
- B. WPA encryption
- C. VLAN implementation
- D. WEP encryption

Answer: B

NEW QUESTION 538

- (Exam Topic 3)

A VoIP system will require 23 concurrent voice channels and signaling channel. Which of the following types of service would provides the BEST connectivity to the PSTN?

- A. PRI
- B. BRI
- C. E1/E3
- D. DSL

Answer: A

NEW QUESTION 540

- (Exam Topic 3)

Jeff, a network technician, is installing a wireless router. Which of the following should Jeff consider to get the BEST signal strength?

- A. WAP placement
- B. PoE devices
- C. MAC filtering
- D. Encryption type

Answer: A

NEW QUESTION 543

- (Exam Topic 3)

When Jeff, a technician, is troubleshooting a problem, which of the following is the NEXT step after verifying full system functionality?

- A. Establish a plan of action to resolve the problem and identify potential effects.
- B. Implement the solution.
- C. Establish a theory of probable cause.
- D. Document findings, actions, and outcomes.

Answer: D

NEW QUESTION 544

- (Exam Topic 3)

A network technician is installing a simple SOHO router with wireless functionality. Which of the following wireless encryption standards would be BEST suited for the HIGHEST level of security?

- A. WPA2
- B. WPA
- C. WEP64
- D. WEP128

Answer: A

NEW QUESTION 549

- (Exam Topic 3)

Which of the following is an example of two factor authentication?

- A. Password, device certificate and PIN
- B. SSL web server certificate and password
- C. User password and administrator password
- D. Password and hardware token OTP

Answer: D

NEW QUESTION 551

- (Exam Topic 3)

Which of the following layers of the OSI model is between the Data Link and Transport layers?

- A. Application
- B. Session
- C. Network
- D. Physical

Answer: C

NEW QUESTION 553

- (Exam Topic 3)

Which of the following tools can the technician use to analyze TCP/IP packets when trying to determine a connection problem within a subnet?

- A. Wire mapper
- B. Protocol analyzer
- C. Cable tester
- D. SYSLOG server

Answer: B

NEW QUESTION 555

- (Exam Topic 3)

An organization wants to perform maintenance on any of its web servers without affecting the service availability during a scheduled change window. Which of the following network devices would be required to provide this functionality?

- A. Router

- B. Forward proxy
- C. Load balancer
- D. Firewall

Answer: C

NEW QUESTION 557

- (Exam Topic 3)

Which of the following is the correct representation of an IPv6 address?

- A. ::
- B. 0:0:0:0:0:0:0:1
- C. 1:2:3:4:AB:CD:EF
- D. 2001::4860:800f::

Answer: A

NEW QUESTION 558

- (Exam Topic 3)

Which of the following cloud infrastructure designs includes on premise servers utilizing a centralized syslog server that is hosted at a third party organization for review?

- A. Hybrid
- B. Public
- C. Community
- D. Private

Answer: A

NEW QUESTION 561

- (Exam Topic 3)

Which of the following methods limits access to a network based on characteristics of the network card?

- A. IP filtering
- B. MAC filtering
- C. Port filtering
- D. Encryption

Answer: B

NEW QUESTION 565

- (Exam Topic 3)

Zach, a technician, needs to terminate a CAT5e Ethernet cable to a 110 block. Which of the following tools should he use?

- A. Toner probe
- B. Punch down
- C. Wire tester
- D. Crimper

Answer: B

NEW QUESTION 566

- (Exam Topic 3)

Lisa, a network technician, needs to introduce a few more cables to the existing patch panel. Which of the following tools would she use?

- A. OTDR
- B. Multimeter
- C. Punch down tool
- D. Temperature monitor

Answer: C

NEW QUESTION 567

- (Exam Topic 3)

A technician wants to connect a new wireless router to a main network switch. Which of the following cable types would MOST likely be used to establish this connection?

- A. Telephone
- B. Parallel
- C. Serial
- D. CAT6

Answer: D

NEW QUESTION 570

- (Exam Topic 3)

Which of the following solutions will detect and disable a rogue access point?

- A. Port scan
- B. Packet sniffer
- C. IPS
- D. IDS

Answer: C

NEW QUESTION 572

- (Exam Topic 3)

Which of the following IP addresses would be classified as private?

- A. 10.100.200.0
- B. 169.253.10.20
- C. 172.168.5.0
- D. 200.100.25.0

Answer: A

NEW QUESTION 576

- (Exam Topic 3)

Which of the following security threats relies primarily on user deception and misinformation?

- A. Rogue access points
- B. DoS attacks
- C. Man-in-the-middle attacks
- D. Phishing

Answer: D

NEW QUESTION 577

- (Exam Topic 3)

A Windows server has a problem after booting up. Kim, a technician, should immediately check the:

- A. history logs.
- B. cron logs.
- C. application logs.
- D. system logs.

Answer: D

NEW QUESTION 578

- (Exam Topic 3)

A technician notices that network access is becoming increasingly slow. All of the activity lights, on the only network layer 2 switch, are blinking at steadily increasing rates. Which of the following is the MOST likely cause of the increased traffic?

- A. STP blocking
- B. IP addresses
- C. MTU mismatch
- D. Switching loop

Answer: D

NEW QUESTION 580

- (Exam Topic 3)

Lisa, an administrator, has set up an 802.11n wireless network. Users with 802.11n laptops have reported that speeds are slow. After testing, Lisa determines that users max out at 802.11g speeds. Which of the following would MOST likely fix this issue?

- A. Enable wireless multimedia (WMM) for QoS
- B. Use the 40MHz channels in the 2.4GHz band
- C. Enable access point antenna isolation
- D. Limit the clients to 802.11g compatible laptops

Answer: A

NEW QUESTION 582

- (Exam Topic 3)

169.254.1.100 is an IP address which would MOST likely come from which of the following?

- A. CIDR
- B. DHCP
- C. APIPA
- D. DNS

Answer: C

NEW QUESTION 583

- (Exam Topic 3)

A SOHO with ten Wi-Fi equipped laptops needs a new network installed. Which of the following items would be used to setup the office using a new DSL line? (Select TWO).

- A. Router
- B. Wi-Fi Access point
- C. Cable modem
- D. Ten WiMAX adapters
- E. Ten CAT6 patch cables

Answer: AB

NEW QUESTION 588

- (Exam Topic 3)

A company has attempted to introduce a new major network segment to allow growth in capacity. On the core switch, a GBIC was used to interconnect with a newly placed downstream distribution switch for the first time. Soon after this implementation, a network flood and an outage occurred between the core and new distribution network modules. Which of the following should the network administrator troubleshoot FIRST in order to rectify the issue?

- A. Check for switching loops between core and distribution switches.
- B. Check whether an incorrect VLAN has been assigned to the new distribution switch.
- C. Check for inconsistent or missing routes between the core and distribution switches.
- D. Check whether the GBIC was set to multi-mode instead of single-mode SFP.

Answer: A

NEW QUESTION 593

- (Exam Topic 3)

Zach, a technician, wants to test a laptop's NIC for functionality but has no other networking equipment to attach it to. Which of the following would allow him to test basic functionality of the NIC?

- A. Loopback plug
- B. Protocol analyzer
- C. Smart jack
- D. Coupler

Answer: A

NEW QUESTION 594

- (Exam Topic 3)

A network technician is troubleshooting intermittent issues with VoIP call quality. A throughput tester can help assess the functionality of which of the following?

- A. LLDP
- B. VLAN tagging
- C. QoS
- D. SIP trunking

Answer: C

NEW QUESTION 598

- (Exam Topic 3)

Kim, the client, has requested a cost-effective network solution to accommodate the ability to reconfigure the office space as needed. Which networking solution would provide the BEST solution?

- A. Private IP Addressing
- B. Wireless Access Points
- C. Wide Area Networking
- D. Virtual Local Area Networks

Answer: B

NEW QUESTION 599

- (Exam Topic 3)

Which of the following is networking stand-alone hardware that will permit any WiFi-compliant device to connect to a network?

- A. Wireless hub
- B. Wireless firewall
- C. Wireless access point
- D. Wireless bridge

Answer: C

NEW QUESTION 600

- (Exam Topic 3)

A network technician wants to baseline traffic flows on a specific network. Which of the following will provide the GREATEST level of detail?

- A. Network flow information
- B. SNMP traps
- C. Debug level syslog
- D. Protocol analyzer

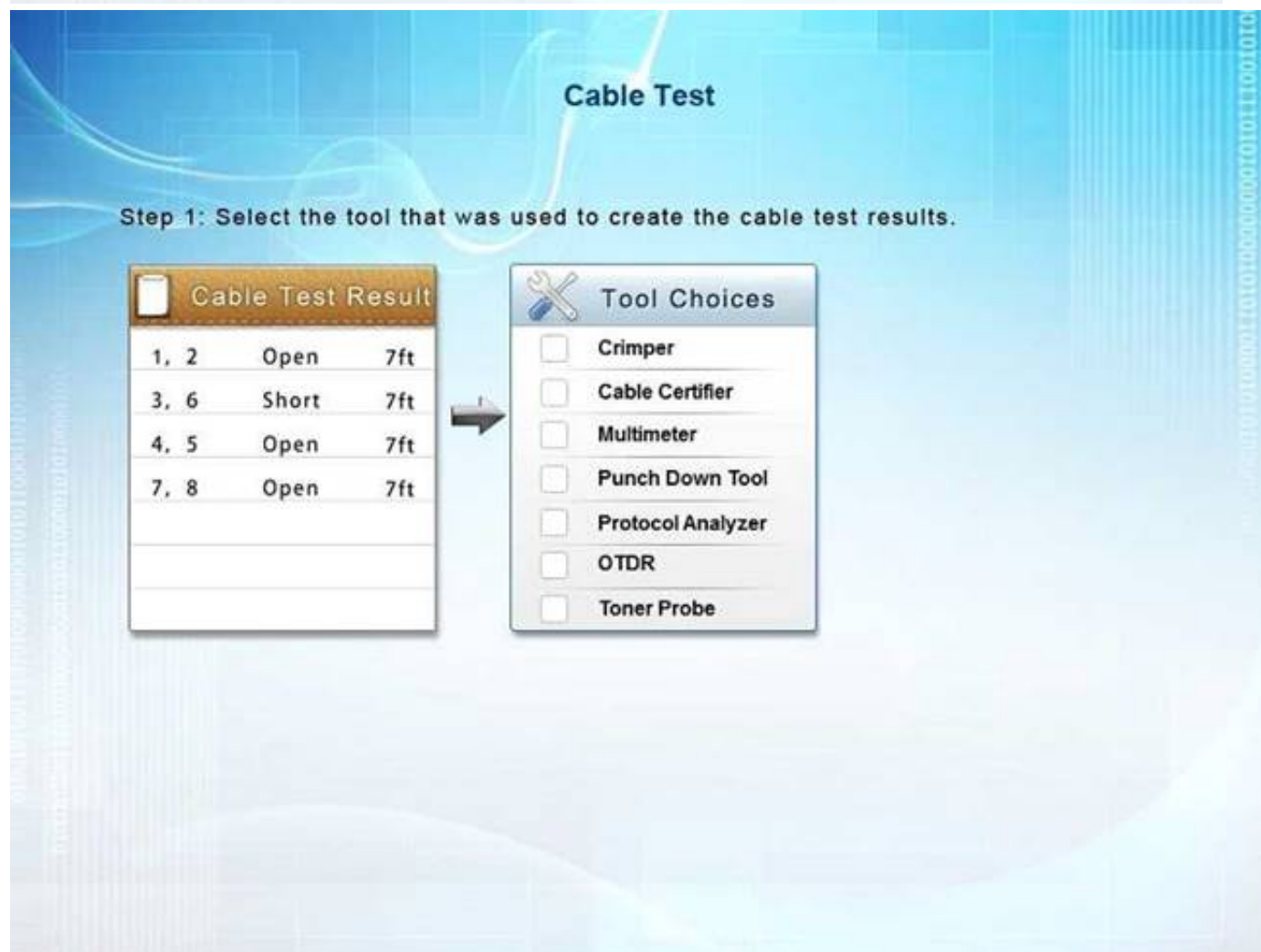
Answer: D

NEW QUESTION 601

- (Exam Topic 3)

You have been tasked with testing a CAT5e cable. A summary of the test results can be found on the screen. Step 1: Select the tool that was used to create the cable test results.

Step 2: Interpret the test results and select the option that explains the results. After you are done with your analysis, click the 'Submit Cable Test Analysis' button.



- A. Mastered
- B. Not Mastered

Answer: A

Explanation:

A Cable Certifier provides "Pass" or "Fail" information in accordance with industry standards but can also show detailed information when a "Fail" occurs. This includes shorts, the wire pairs involved and the distance to the short. When a short is identified, at the full length of the cable it means the cable has not been crimped correctly.

NEW QUESTION 606

- (Exam Topic 3)

A network administrator wants to monitor traffic by deploying MIBs. Which of the follow network monitoring resources would be used?

- A. SCTP
- B. Packet sniffer
- C. DCCP
- D. SNMP

Answer: D

NEW QUESTION 610

- (Exam Topic 3)

A user snapped the retention tab off of a network cable. Which of the following tools would Jeff, a technician, use to replace the RJ-45 connector?

- A. Wire tester
- B. Punch down
- C. Crimper
- D. Multimeter

Answer: C

NEW QUESTION 615

- (Exam Topic 3)

An 801.11g wireless access point was configured as follows:

- AP encryption forced to WPA2-AES mode only
- MAC address filtering enabled with the following MAC address in the allow list: 00-ab-29-da-c3-40 Which is true about the above configuration?

- A. Any 802.11b/g compatible client can connect to the wireless network if they support TKIP, the MAC address is 00-ab-29-da-c3-40, and the encryption key is known by the client.
- B. An 802.11a compatible client can connect to the wireless network only if its MAC address is 00- ab-29-da-c3-40 and the encryption key is known by the client.
- C. An 802.11n compatible client can connect to the wireless network only if its MAC address is 00- ab-29-da-c3-40 and the encryption key is known by the client.
- D. Any 802.11g compatible client can connect to the wireless network if the encryption key is known by the client.

Answer: C

NEW QUESTION 616

- (Exam Topic 3)

A network technician needs to install an additional access point to the company's wireless network. The network has two 802.11b access points. Which of the following channels should be used to allow the access point's coverage areas to overlap?

- A. 1, 6, 11
- B. 2, 5, 10
- C. 3, 13, 23
- D. 4, 8, 16

Answer: A

NEW QUESTION 621

- (Exam Topic 3)

The network optimization process used to allow reasonable use of data, voice, and video on the same network infrastructure is called:

- A. CARP
- B. QoS
- C. Traffic shaping.
- D. Fault tolerance.

Answer: B

NEW QUESTION 622

- (Exam Topic 3)

Kim, a technician, is configuring an 802.11n access point. Other WAPs on the network use 802.11b. Which of the following will Kim have to setup to make sure these WAPs will be able to communicate?

- A. Enable mixed mode
- B. Disable SSID
- C. Disable encryption
- D. Enable `n` only mode

Answer: A

NEW QUESTION 627

- (Exam Topic 3)

Lisa, a consultant, is inspecting an office that reports frequent wireless issues. Upon scanning the network broadcasting in the vicinity of the office, seven SSIDs are found. The company's Wi-Fi network and three others all share channel six. Which of the following is MOST likely causing the issue?

- A. Frequency interference
- B. Low signal strength
- C. Standard mismatch
- D. Incorrect channel

Answer: A

NEW QUESTION 628

- (Exam Topic 3)

Kim, a network administrator, should consult which documentation sources FIRST to determine the cause of recent network issues?

- A. Network map
- B. Cable management
- C. Change management
- D. Asset management

Answer: C

NEW QUESTION 632

- (Exam Topic 3)

A new user is reporting connectivity issues. Zach, the network technician, notices that there is no link light on the user's NIC. Which of the following would be used to verify the wiring back to the patch panel?

- A. Butt set
- B. Cable certifier
- C. Toner probe
- D. Snips

Answer: B

NEW QUESTION 637

- (Exam Topic 3)

A user reports a network failure on a computer. The technician determines that the computer and NIC are operating properly. Which of the following tools can the technician use to trace the network cabling back to the punch down block?

- A. Protocol analyzer
- B. Multimeter
- C. Punch down tool
- D. Toner probe

Answer: D

NEW QUESTION 639

- (Exam Topic 3)

Two WAPs are positioned with overlapping coverage, but seamless roaming across them is not working. Which of the following should be checked?

- A. WPA should be enabled
- B. PKI should be turned off
- C. WAP SSIDs are matching
- D. WAPs are transmitting on same channel

Answer: C

NEW QUESTION 643

- (Exam Topic 3)

Which of the following technologies could be implemented to improve call clarity when using VoIP technology?

- A. Static IP addressing
- B. Caching engines
- C. QoS
- D. Port forwarding

Answer: C

NEW QUESTION 645

- (Exam Topic 3)

Jeff, a customer, has a wireless network and has reported that the network traffic from the wireless access points seems high compared to the limited number of wireless devices used. Jeff believes that other non-employees are using the wireless network to access the Internet. Which of the following could be used to limit the access to the wireless network? (Select TWO).

- A. WPA encryption
- B. Changing wireless channels
- C. MAC filtering
- D. Changing wireless speed standards
- E. SSID disable

Answer: AC

NEW QUESTION 647

- (Exam Topic 3)

A network technician is configuring user's access to a VPN concentrator and has advised to use a protocol that supports encryption over UDP. Which of the following protocols has the technician MOST likely configured for client use?

- A. TFTP
- B. DTLS
- C. DNS
- D. SNMP

Answer: B

NEW QUESTION 650

- (Exam Topic 3)

Which of the following protocols is used for remote management of devices?

- A. SNMP
- B. TFTP
- C. Syslog
- D. SMTP

Answer: A

NEW QUESTION 654

- (Exam Topic 3)

There is suspected virus activity on the network. Which of the following would Lisa, a technician, use to study network traffic?

- A. Protocol analyzer
- B. Cable tester
- C. Cable certifier
- D. Environmental monitor

Answer: A

NEW QUESTION 658

- (Exam Topic 3)

A network administrator has created a virtual machine in the cloud. The technician would like to connect to the server remotely using RDP. Which of the following default ports needs to be opened?

- A. 445
- B. 3389
- C. 5004
- D. 5060

Answer: B

NEW QUESTION 663

- (Exam Topic 3)

A network technician is trying to terminate CAT5 modular jacks. Which of the following tools would be MOST appropriate for this scenario?

- A. Crimper
- B. OTDR
- C. Throughput tester
- D. Punch down tool

Answer: D

NEW QUESTION 666

- (Exam Topic 3)

Which of the following is used to create a secure connection between a client and a host?

- A. VLAN
- B. Proxy server
- C. IIS server
- D. VPN

Answer: D

NEW QUESTION 667

- (Exam Topic 3)

Which of the following protocols is used to allow multiple hosts to share a common IP address?

- A. HTTPS

- B. ARP
- C. CARP
- D. NAT

Answer: D

NEW QUESTION 669

- (Exam Topic 3)

Which of the following diagnostic commands relies on proper forwarding of ICMP ECHO packets?

- A. ipconfig
- B. ping
- C. route
- D. nbstat

Answer: B

NEW QUESTION 673

- (Exam Topic 3)

A network technician configures a firewall to block only certain IP addresses from accessing the Internet. All users are reporting that they are unable to access the Internet.

Which of the following is the MOST likely reason?

- A. Incorrectly configured ACL
- B. Implicit allow statement
- C. SMTP requests are being denied
- D. All protocols are being allowed in

Answer: A

NEW QUESTION 678

- (Exam Topic 3)

The software in a virtualized environment that controls resource allocation and allows multiple operating system guests to run on the same physical platform is known as the:

- A. hypervisor.
- B. LPAR.
- C. broker.
- D. VDI.

Answer: A

NEW QUESTION 680

- (Exam Topic 3)

Which of the following occurs when antenna gain is increased on an access point?

- A. Connection speeds decrease
- B. Throughput decreases
- C. Cell size increases
- D. Attenuation increases

Answer: C

NEW QUESTION 681

- (Exam Topic 3)

Kim, a network administrator, is seeing workstations in building C authenticate to the building A wireless access point. Which of the following would resolve this issue?

- A. Change the security method
- B. Reduce the transmission power
- C. Change the SSID
- D. Change the frequency

Answer: B

NEW QUESTION 685

- (Exam Topic 3)

Lisa, a technician, has configured a new switch that is remotely accessed using SSH. The switch is working properly but cannot be accessed remotely. Which of the following items is MOST likely missing in the configuration?

- A. Port speed
- B. Cryptokey
- C. Data VLAN
- D. NAT/PAT

Answer: B

NEW QUESTION 688

- (Exam Topic 3)

A technician needs to limit the amount of broadcast traffic on a network and allow different segments to communicate with each other. Which of the following options would satisfy these requirements?

- A. Add a router and enable OSPF.
- B. Add a layer 3 switch and create a VLAN.
- C. Add a bridge between two switches.
- D. Add a firewall and implement proper ACL.

Answer: B

Explanation:

We can limit the amount of broadcast traffic on a switched network by dividing the computers into logical network segments called VLANs.

A virtual local area network (VLAN) is a logical group of computers that appear to be on the same LAN even if they are on separate IP subnets. These logical subnets are configured in the network switches. Each VLAN is a broadcast domain meaning that only computers within the same VLAN will receive broadcast traffic.

To allow different segments (VLAN) to communicate with each other, a router is required to establish a connection between the systems. We can use a network router to route between the VLANs or we can use a 'Layer 3' switch. Unlike layer 2 switches that can only read the contents of the data-link layer protocol header in the packets they process, layer 3 switches can read the (IP) addresses in the network layer protocol header as well.

NEW QUESTION 692

- (Exam Topic 3)

Several users from the same building are reporting connectivity issues. The SFP at that building's IDF switch is showing a link light, but there is no link light to the corresponding switch's SFP at the MDF. Which of the following is the MOST likely cause?

- A. A crossover cable is being used.
- B. DB loss is too high on all strands.
- C. Only TX or RX strand is working.
- D. TX and RX are reversed.

Answer: C

NEW QUESTION 693

- (Exam Topic 3)

A company is having a new T1 line installed. Which of the following will the connection MOST likely terminate to?

- A. Core switch
- B. MDF
- C. Ethernet router
- D. IDF

Answer: B

NEW QUESTION 698

- (Exam Topic 3)

A network technician at a small office upgrades the VLAN switch. After the upgrade, a user reports being unable to access network resources. When the technician checks the switchport, the LED light is not lit. Which of the following should technician check FIRST?

- A. The device is using the correct cable type.
- B. The switchport is functioning properly.
- C. The device is connected to the switch.
- D. The switch is connected to the router.

Answer: C

NEW QUESTION 700

- (Exam Topic 3)

Which of the following is the prefix for a link-local IPv6 address?

- A. FE80::/10
- B. FF00::/8
- C. 2FFE::/16
- D. FEEF::/12

Answer: A

NEW QUESTION 701

- (Exam Topic 3)

Which of the following devices is used to distribute network traffic equally over multiple links?

- A. Content filter
- B. DNS server
- C. Load balancer
- D. Proxy server

Answer: C

NEW QUESTION 706

- (Exam Topic 3)

A technician is surveying college's network equipment room and connectivity. Which of the following types of documentation does the technician need perform a detailed site survey? (Select THREE).

- A. IDF/MDF documentation
- B. Cable run label documentation
- C. network configuration documentation
- D. Performance baseline documentation
- E. Standard operating procedure documentation
- F. Change management documentation
- G. Rack diagram documentation

Answer: ACG

NEW QUESTION 709

.....

Thank You for Trying Our Product

We offer two products:

1st - We have Practice Tests Software with Actual Exam Questions

2nd - Questions and Answers in PDF Format

N10-007 Practice Exam Features:

- * N10-007 Questions and Answers Updated Frequently
- * N10-007 Practice Questions Verified by Expert Senior Certified Staff
- * N10-007 Most Realistic Questions that Guarantee you a Pass on Your First Try
- * N10-007 Practice Test Questions in Multiple Choice Formats and Updates for 1 Year

100% Actual & Verified — Instant Download, Please Click
[Order The N10-007 Practice Test Here](#)